

Maptech ChartKit Block Island, RI to Canada Border (Passamaquoddy Bay)

With Free companion CD

- Reg. 2, 15th Edition
- Includes waypoints, courses and distances, chart datums for GPS and Yeoman
- Reference points
- Color, aerial photos of harbors and anchorages
- Save hundreds of dollars on government charts when purchasing a single ChartKit
- Includes a protective vinyl cover
- Exact duplicates of ChartKit pages on CD-ROM
- PC tools for planning, printing, GPS and Real-Time positioning
- 22" x 17"
- 86 chart pages



Item	Model	Area of Coverage	Ship	Net
800169	PAPR02-15	Block Island, RI to the Canadian Border	4 lbs	\$104.99

Maptech Chesapeake Bay to Florida

- 3rd Edition
- Information on coastal dining and area attractions
- Color, aerial and destination photos
- Detailed navigation advice and anchorages
- ICW bridge tables
- 1,000 marina and facility listings
- 8,625" x 10,875"
- 526 pages



Item	Model	Area of Coverage	Ship	Net
800170	BKCBF-3	Cape May and Delaware Bay through the Chesapeake and Intracoastal Waterway to Fernandina Beach, Florida	4 lbs	\$38.99

Waterbrands Storage Crate

- Durable polypropylene
- Tough enough to stow heavy items, but soft enough not to mar boat surface
- Great for stowing, organizing and toting all kinds of gear
- Available in Blue



Item	Model	Size	Ship	Net
400915	70000	13"L x 11"H x 13"W	3 lbs	\$12.99

SigMarine Diesel/Kerosene Cabin Heater

Bulkhead Mount or Floor standing

The 100, 120, 170 and 180 are small cabin heaters. They provide good heat due to the radiant top, heat shroud and lower mounting position. Great in small boats or to heat a section of a larger boat. They have a natural draft and vaporizing oil heater so they can be used with no electricity with the right installation. Features:

- Optional hot air heat exchanger stock robber system
- Flue size: 3" diameter
- 12 Volt draft assist included
- Fuel: Diesel #1, Diesel #2 or Kerosene

100 AND 120— Heat output— Max BTU: 13,300/Min BTU: 5,500

- 4.5" Stainless Steel burner and a flame viewing window
- Fuel consumption per 24 hours: Low heat: .95 gallons; High heat: 2.3 gallons

Item	Model	Boat size	Dimensions H x W x D	Ship	Net
900830	10100	Power 22-27', Sail: 22-32'	17.5" x 8.75" x 9.75"	18 lbs	\$648.99
900831	10120	Power 22-30', Sail: 22-40'	22.75" x 8.25" x 9.75"	20 lbs	698.99

170 AND 180— Heat output— Max BTU: 16,000/Min BTU: 6,000

- 5.5" Stainless Steel burner and a flame viewing window
- Fuel consumption per 24 hours: Low heat: 1.14 gallons; High heat: 3 gallons

Item	Model	Boat size	Dimensions H x W x D	Ship	Net
900832	10170	Power 22-40', Sail: 22-45'	23.5" x 9.5" x 11.25"	24 lbs	\$818.99

180 Floor Standing

Item	Model	Boat size	Dimensions H x W x D	Ship	Net
900833	10180	Power 22-40', Sail: 22-45'	24" x 11.5" x 13.25"	? lbs	\$798.99



SigMarine 200 and 250 Diesel/Kerosene Cookstove

Max BTU: 15,000 / Min BTU: 6,000

The Traditional, hand-assembled classic Sig Marine Model 200 or 250 oil stove has a large loading door with a large window that makes cooking easy. The temperature gauge has been specifically mounted inside the oven to give a more accurate reading. The stove is constructed of high-grade Stainless Steel with a cast iron top to retain heat and has a standard draft fan for fast start up. Features:

- 12 Volt draft assist fan and speed control
- (1) Set of pot holders
- Oven window: 7-1/2" x 5-3/4"
- Oven size inside: 11"H x 11"W x 13"D
- Fuel: Diesel #1, Diesel #2 or Kerosene
- Fuel consumption per 24 hours: High heat: 2 gallons; Low heat: 1 gallon
- Sea Rails: 1/2"



Item	Model	Flue	Outer Dimensions H x W x D	Ship	Net
SIGMAR 200					
900834	20124	4"	23.5" x 22" x 20.25"	130 lbs	\$1625.99
900835	20125	5"	23.5" x 22" x 20.25"	130 lbs	1625.99
SIGMAR 250					
900836	25124	4"	23.5" x 26" x 20.25"	135 lbs	\$2036.99
900837	25125	5"	23.5" x 26" x 20.25"	135 lbs	2036.99

Simrad SIMR SimNet Starter Kit

Without NMEA interface

Includes one each of the following items:

- A- (1) SimNet 7 prong joiner (24006298)
- B- (1) SimNet power cable with terminator (24005902)
- C- (1) 5m SimNet cable (24005845)
- D- (1) SimNet Termination plug (24005894)



Item	Model	Ship	Net
258135	SIMKIT-1	2 lbs	\$94.99

SCAD Mini G4 LED Bulb Replacement

LED replacement bulb that fits small dome lights that are too small to convert to full sized Sensibulbs. Approximately the size of a standard G4 halogen bulb this LED delivers similar light to a 10 watt halogen bulb. It is an excellent choice for those hard to fit boats with small overhead lights like in Beneteau or other modern monohulls or catamarans. Features:

- Fits a standard G4 socket
- The pin base is fixed in the plane of the 15 tiny LEDs that emit warm light
- These lights can be dimmed with a Sensibulb mini dimmer, SENCK Light Fixture Dimmer

Item	Model	Size	VDC	Ship	Net
701103	10032	1"L x 1/2"W x 1/4"H	12/24	1 lbs	\$32.99



Raymarine CA500 Underwater Camera

This thru-hull camera will display what is directly below the boat, making it an ideal underwater fishing camera or underwater video surveillance/safety system. Simply connect the single cable to any compatible Raymarine system. Features:

- Low lux (0.01)
- Sapphire window
- Plastic housings
- Day or night viewing
- Retractable insert

Item	Model	Series compatibility	Ship	M.A.P.
258191	A62300	C Wide, E Classic, E Wide, G	2 lbs	\$499.00



ACR Aqualink™ View PLB-350C

NEW next-generation digital display

Featuring the same advanced technology and robust features as the Aqualink™ 406, the Aqualink View™ adds a reassuring element with its next-generation digital display which upon activation, displays a continuous stream of crucial data.

- Tells rescuers who and where you are
- Confirms battery, position and transmitter are working
- New display prompts for testing and deployment
- Can send a separate "I'm OK" message with position by text or email to friends and family with a small annual subscription fee

Item	Model	Size	Ship	Net
550233	PLB-350C	2.25" x 5.88" x 1.49"	1 lbs	\$449.99



DinghyRack System

The DinghyRack System is a set of durable foam brackets. They are used to support and store an inflatable dinghy on the bow of your boat, preventing damage to the fiberglass by keeping the inflatable 2"- 3" above the deck. No tools needed. No holes to drill.

- Made of 3" thick high quality marine grade XLPE foam
- Eliminates the need for permanently attached chocks or davit systems
- Prevents damage to boat from the oarlocks and the transom
- One size fits all
- Economical
- Supports your inflatable dinghy upside down to prevent filling with rain water

Item	Model	Description	Ship	M.A.P.
454994	DR-3	3 Brackets	2 lbs	\$39.99
454995	DR-4	4 Brackets	2 lbs	54.99
454996	DR-1	1 Bracket	1 lbs	14.99



DR-3CP2

Aqua Signal Series 41

Designed for direct mounting on power or sailboats to 164 ft.*

- Rigid, White, polycarbonate housing
- Shock resistant, non-corrosive, non-magnetic, seawater resistant
- Rigid acrylic fresnel lens (easy to change)
- IP 55 Navigation Lights; IP 67 Foredeck Lights
- 2 wire for navigations lights, spade connectors provided

Aqua Signal navigation lights are certified as a complete assembly including the original equipment bulb to maintain ongoing certification

Please specify: Port or Starboard

Item	Description	Nm	VDC	Watts	Ship	Net
700107	Port or Starboard	2	12	25	2 lbs	\$10.00

* Specific application depending on visibilities. See technical information in table at www.defender.com.



Starboard

Port

DuraSafe Codeable Locks

This lock incorporates a cylinder that enables you to insert your vehicle key, turn once and program the lock to that key for 1-key convenience.

- Insert your own car or truck key
- Turn once, the lock learns your key
- Compatible with over a million vehicles*

Item	Model	Description	Ship	Net
001651	CCL60	Cable Lock	2 lbs	\$29.99

Please specify Cable Lock model:

CCL60-F (Ford)	CCL60-GMB (GM-newer)
CCL60-C (Chrysler/Dodge)	CCL60-GMA (GM-older)

Item	Model	Description	Ship	Net
001652	CSTL	Spare Tire Lock	2 lbs	29.99

Please specify Spare Tire Lock model:

CSTL-F (Ford)	CSTL-GMB (GM-newer)
CSTL-C (Chrysler/Dodge)	CSTL-GMA (GM-older)

*See vehicle compatibility chart at www.defender.com

NOTE: Locks may be programmed only one time. They are not reprogrammable.



CCL60



CSTL

Dr. LED Dave™ Surface Mounted Underwater LED Light

Low profile surface mount high-flux LED underwater puck light. Latest high-flux LED technology provides high lumen-per-watt light. Aluminum housing provides ample heat sinking to the LEDs to ensure ultra long life operation. 3.3' lead provided.

- 20 micron thick anodized (plated) surface provides corrosion proof housing
- Highly shock and vibration resistant

Item	Description	Light output	Voltage	Ship	Net
701115	White, 4" dia.	400 lumens	12VDC, 24VDC or 12VAC	1 lbs	\$149.99
701116	Blue, 4" dia.	400 lumens	12VDC, 24VDC or 12VAC	1 lbs	169.99
	Green, 4" dia.	400 lumens	12VDC, 24VDC or 12VAC	1 lbs	169.99



Dr. LED Neptune™ Through-Hull Underwater LED Light

Three US Made high-flux LEDs provide a high lumen-per-watt light.

- Aerospace grade anodized aluminum composite body
- Extremely corrosion proof with a surface as hard as steel
- High intensity LED travels farther underwater for maximum visibility and truer colors
- Long service life, shock proof, ultra rugged with no filament to burn out or break
- Can be operated out of water
- Requires a 2-13/16" diameter hole

Item	Color	Light output	Voltage	Ship	Net
701117	White	500 lumens	12VDC or 24VDC	4 lbs	\$569.99
701118	Blue	500 lumens	12VDC or 24VDC	3 lbs	629.99
	Green	500 lumens	12VDC or 24VDC	3 lbs	629.99



Dr. LED Neptune XII™ Through-Hull 12 LED Light

This 2000+ lumens Neptune Light has 12 US made high Flux LEDs.

- Aerospace grade anodized aluminum composite body
- Extremely corrosion proof with a surface as hard as steel
- High intensity LED travels farther underwater for maximum visibility and truer colors
- Long service life, shock proof, ultra rugged with no filament to burn out or break
- Can be operated out of water
- Requires a 4-1/2" diameter hole

Item	Color	Light output	Voltage	Ship	Net
701119	White	500 lumens	12VDC or 24VDC	2 lbs	\$999.99
701120	Blue	500 lumens	12VDC or 24VDC	2 lbs	1099.99
	Green	500 lumens	12VDC or 24VDC	2 lbs	1099.99



Dr. LED John™ Under-Cabinet LED Light

- Surface mount, general purpose light
- Fabricated from the highest quality components to assure long, trouble free functioning
- The patented internal circuitry provides consistent brightness and makes it immune to life-shortening voltage fluctuations
- Low power draw makes it the perfect way to reduce energy consumption
- High-flux technology provides high lumen-per-watt light

White version- 3-position switch (High-Off-Low) to select 2 warm, White brightness levels. High level is equivalent to about a 45 watt incandescent bulb.

Red/White version- 3-position switch (Red-Off-White). Long service life, shockproof, ultra rugged with no filament to burn out or break. Lead free, mercury free and no UV output.

Item	Color	Dimensions L x W x H	Voltage	Ship	Net
701121	Warm White	8" x 3" x 1.4"	12VDC or 24VDC	1 lbs	\$51.99
	Red/White	8" x 3" x 1.4"	12VDC or 24VDC	1 lbs	51.99

Dr. LED Polar Star™ Series 40 LED Replacement Bulb

LED Bayonet bulb replacements for single, bi and tri-colored Aqua Signal Series 40, 41, 42, 50, single-colored Hella Series 2984, 2386, Perko 200, 1127, 1130 and many other similar navigation lights. All you need to do is to remove their incandescent bulbs and replace them with LED bulbs.

- Highest quality components: Gold plated contacts and lead free solder
- Hardened polycarbonate outer shell makes these shock, vibration, and water-resistant
- Built-in patent-pending circuitry maintains constant, 2 nm visibility brightness from an input voltage range of 11VDC to 15VDC while only drawing 0.09A
- Ultra-rugged with no filament to burn out or break

Item	Model	Color	Ship	Net
701122	8000043	Amber/Yellow	1 lbs	\$41.99
701123		Specify: Red, Green or White*	1 lbs	39.99

*Note: White LED bulbs should not be used behind colored lenses in nav lights, as they will not produce the required brightness. Only the corresponding colored LEDs should be used in navigation lights with colored lenses.

Dr. LED Hella 2492 Anchor Light Replacement Bulb

The Hella 2492 is specially designed as a direct incandescent bulb replacement for the Hella series 2492 anchor lights. This bulb is fabricated from the highest quality components to assure long life and trouble-free functioning. The patented internal circuitry provides consistent brightness and makes it immune to life-shortening voltage fluctuations.

- 2nm visibility, multi-voltage 12/24VDC, high-flux LED
- Hella 78235 78236
- Low power draw, ~1W (non-polarized connection)
- Ultra-rugged with no filament to burn out or break

Item	Model	Color	Ship	Net
701124	8000067	Single color White BA15S Bulb	1 lbs	\$39.99

Imtra "Mini Tower" LED Bulb

The new G4 Mini Tower LED works great in tube lights, small reading lights, pendant lights, and glass wall sconces where a tiny G4 is required. It projects light in all directions similar to an incandescent filament bulb. Very popular in newer Beneteaus and custom yachts with tube-shaped swiveling reading lights. Proprietary PWM Constant-Current chipset results in high performance across the entire 8-30VDC range.

- High output SMD LEDs
- Constant-current drive topology
- Over-voltage protection
- No radiated heat, thermally efficient design

Item	Model	Color	Voltage	Watts	Socket	Ship	Net
701125	ITTWG4-15W	Warm White	8-30VDC	1.3	G4/GU4	1 lbs	\$21.99

Imtra Xenon "XH" Miniature Halogen Bulb

Bi-Pin base.

Item	Model	Color	Voltage	Watts	Ship	Net
701126	ILG4F-1210XH	Clear	12	10	1 lbs	\$2.99



Igloo Great White 250 Cooler

The Igloo Great White 250 Cooler is the largest marine cooler from Igloo.

- Ruler molded on lid
- Molded-in handles
- UV Inhibitors
- Reinforced bottom
- Threaded drain plug
- Holds 2-Liter bottle upright
- Capacity: 250 Qt. (236L)
- Can capacity: 349
- 57.86"L x 25.49"W x 26.12"H

Item	Model	Ship	Net
352255	IGL 00044465	210 lbs	\$599.99



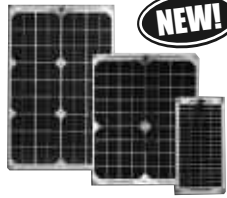
SunWize SolCharger Solar Panels

SolCharger Solar modules operate DC loads with small to moderate energy requirements. Designed to perform in any environment and for any remote power application. A polymer coating produces a module that allows maximum light transmission to the single crystalline cells. There is no need for a metal frame, creating a smaller profile than other modules.

- Panel type and material: Monocrystalline/Silicon, polymer-encapsulated
- Flame retardant
- Frameless with black plastic substrate
- Durable and lightweight
- Output wiring: 3 foot cable attached
- Vandal resistant
- High efficiency performance
- Warranty: 2 years

Item	Model	Amps/Watts	Dimensions	Ship	Net
204796	12003SC3-12	12/3	9.4" x 5.6"	1 lbs	\$49.99
204797	126006SC6-12	12/6	9.4" x 9.4"	2 lbs	80.99
204798	126012SC12-12	12/12	13.3" x 11.7"	3 lbs	137.99
204799	126018SC18	12/18	16.6" x 13.3"	4 lbs	198.99
204800	126024SC24	12/24	21.18" x 13.3"	5 lbs	273.99

* Note: Electrical Specifications: ±10% @25°C @ 1000W/m2



SunWize SSD-25RM MorningStar SunSaver Duo

SunSaver Duo is an advanced, 4-stage dual battery bank controller for RVs, boats and cottages. It will charge two separate and isolated batteries such as a "house" and an engine battery. When one battery is fully charged, the solar charging is switched to the other battery. The SunSaver Duo employs MorningStar's SunSaver controller technology.

- Remote temperature sensor
- Fuseless protection
- Operating temperature range: -40°C, +45°C
- Easy to read, backlit remote meter
- Epoxy encapsulated
- User adjustable settings
- Remote meter with 30' cord
- 5 year warranty

Item	Model	Volts/Amps	Ship	Net
204801	320016	12/25	3 lbs	\$145.99

SunWize SK-12 MorningStar SunKeeper

MorningStar's SunKeeper is a 3-stage charge controller that provides a low cost, regulated output directly from the solar module to maximize battery life in small solar applications. By mounting directly to the module junction box and wiring through the junction box knockout, the connection is weather-proof and eliminates the need for an additional housing for the controller.

- Weatherproof- Epoxy encapsulated and rated for outdoor use
- Certified for use in Class I, Div. 2 hazardous locations
- Rugged IP65, UV resistant case
- Rated to 70°C
- 5 year warranty

Item	Model	Volts/Amps	Ship	Net
204802	320012	12/12	1 lbs	\$79.99

Aqua Signal Series 15 Halogen Replacement Bulb

G4 type with 2-pin base.

Item	Model	Color	Voltage	Watts	Ship	Net
700629	90437-1	Clear	12	10	1 lbs	\$18.99



Coleman LED Quad Lantern

Battery operated lantern with 4 removable sections. Use as one powerful lantern or four individual area lights.

- (24) 5 mm, White LED's
- Each panel has 6 LEDs, its own on/off switch and recharges while docked on the base
- Four lights in one
- Operates on (8) D cell batteries, not included
- Turn on all four panels at once with master switch on top
- Limited five year warranty

Item	Model	Light Range	Lumens	Approx. Run Time	Ship	Net
701127	2000001150	26 ft.	190	75 hrs.	4 lbs	\$57.49



Coleman Coffee Percolator

- 12 cup capacity
- Made of Stainless Steel
- Corrosion resistant

Item	Model	Ship	Net
400913	805D712T	3 lbs	\$27.99



Coleman French Press

- Make fresh coffee or tea at the campsite, or home
- Stainless Steel construction
- Adjustable handle
- Disassembles for cleaning
- Graduation marks in ounces and milliliters for easy measuring
- Makes up to one liter, 33 oz.

Item	Model	Ship	Net
400914	805-713T	2 lbs	\$22.99



Coleman Marine Utility Light

- 60 lumens
- LED is a Cree Xlamp® XR-C LED
- Universal clip, clips onto surfaces up to 1.25" thick
- Flexible 16" black plated steel arm
- Weather resistant
- Powered by (AAA) batteries, not included

Item	Model	Ship	Net
701128	2000000267	2 lbs	\$26.99



Forespar TruPlug™ Soft Cone-Shaped Emergency Plugs

TruPlug™ has a foam formulation specifically designed to fill irregular shapes, effectively reducing or eliminating most incoming water flows. Unlike hard plugs, it can also be forced into hard-to-reach locations.

- Alternative to the hard wooden plug
- Works to seal most seacocks, valves, thru hull fittings and hoses
- Soft, cone-shaped plug coated with a flexible sealer
- Can be compressed by hand or cut to fit

Item	Model	Size	Ship	Net
551526	150100	9"H x 5" Base dia.	1 lbs	\$15.99



Furuno Transducers

NMEA2000 TRANSDUCERS FOR THE FI-50 SERIES AND NAVNET 3D

These offer direct plug-and-play capability for NavNet 3D MFD networks. All transducers are delivered with standard 6M drop cable for direct connection to an NMEA2000 backbone or bare-wire connection to the handy Furuno FI5002 junction box.

Item	Model	Description	Ship	Net
258193	235-IHF	Plastic, in-hull NMEA2000 Smart Sensor with depth, 235 kHz	5 lbs	\$248.99
258194	235-MSLF	Long stem, Bronze, thru-hull (B122) NMEA2000 Smart Sensor with depth, temp and high speed fairing block, 235 kHz	10 lbs	499.99
258195	DT-800MSF	Bronze, thru-hull, NMEA2000 Smart Sensor with depth and temp, 235 kHz	5 lbs	289.99
258196	DST-800MSF	Bronze, thru-hull, NMEA2000 Smart Sensor with depth, speed and temp, 235 kHz	5 lbs	329.99

BROADBAND- For FCV295 and FCV1150

258197	CA82B-35R	Fiberglass FRP, tank mount, 65kHz-110kHz, 2kW (No plug)	7 lbs	1482.99
--------	-----------	---	-------	---------

Seaward Princess Gourmet 3-Burner LPG Drop-in Stove Top

- Stainless Steel top
- Modern "Euro" design
- Sealed, thermocouple protected burners with grates
- Electronic ignition: 12V hook-up standard
- Two 7,000 BTU's burners and one 10,000 BTU burner
- ANSI Z21.57 certified
- Overall Dimensions: 21-1/2" Width x 18-5/8" Depth x 3" Height
- Cutout Dimensions: 20-1/4" Width x 17-1/2" Depth x 3" Height



Item	Model	Ship	Net
400470	G3278-1001	53 lbs	\$659.99

HARKEN STANDARD WINCHES AVAILABLE AT WWW.DEFENDER.COM



Harken Radial Self-Tailing Manual Winches

Designed for sailors who want lightweight, extremely strong winches with plenty of power. The gripping surface is shaped rather than textured, reducing line wear and providing maximum gripping power. Composite roller bearings reduce friction under load and don't require lubrication. Load-bearing gears and pins are stainless steel for strength and durability.



- Powerful, efficient and dependable
- Multiple styles and finishes
- Integrated stripper arm
- Lightweight, high strength materials
- Power-grip jaws
- Radial shaped surface grip
- Quick installation
- Easy to service and maintain

CHROME

Item	Model	Gear Ratio			Base Dia.	Height	Line Entry	Ship	M.A.P.
		1	2	3					
615501	20STC	2.76	-	-	5-3/8"	5-13/16"	2-3/8"	8 lbs	\$648.75
615502	35.2STC	2.13	5.65	-	5-7/8"	6-11/16"	3-1/8"	11 lbs	1047.75
615503	40.2STC	2.13	6.28	-	6-3/16"	6-7/8"	3-1/4"	12 lbs	1227.75
615504	46.2STC	2.30	9.17	-	7-1/4"	7-15/16"	3-9/16"	18 lbs	1604.25
615505	50.2STC	2.40	10.90	-	7-5/8"	8-1/8"	3-7/8"	21 lbs	2488.50
615506	60.2STC	4.80	14.40	-	9-1/8"	9-11/16"	4-9/16"	31 lbs	3600.00
615507	60.3STC	2.20	4.80	14.40	9-1/8"	9-11/16"	4-9/16"	34 lbs	4275.00
615508	70.2STC	5.70	18.50	-	9-7/16"	10-1/16"	4-1/2"	34 lbs	4575.00
615509	70.2STC	2.30	5.70	18.50	9-7/16"	10-1/16"	4-1/2"	37 lbs	6375.00
615510	80.2STC	9.40	28.10	-	11-5/16"	12-9/16"	6-7/16"	64 lbs	7134.00
615511	80.3STC	2.23	9.40	28.10	11-5/16"	12-9/16"	6-7/16"	67 lbs	7897.50

ALUMINUM

Item	Model	Gear Ratio			Base Dia.	Height	Line Entry	Ship	M.A.P.
		1	2	3					
615512	20STA	2.76	-	-	5-3/8"	5-13/16"	2-3/8"	3 lbs	\$573.75
615513	35.2STA	2.13	5.65	-	5-7/8"	6-11/16"	3-1/8"	4 lbs	956.25
615514	40.2STA	2.13	6.28	-	6-3/16"	6-7/8"	3-1/4"	4 lbs	1106.25
615515	46.2STA	2.30	9.17	-	7-1/4"	7-15/16"	3-9/16"	6 lbs	1467.75
615516	50.2STA	2.40	10.90	-	7-5/8"	8-1/8"	3-7/8"	6 lbs	2315.25
615517	60.2STA	4.80	14.40	-	9-1/8"	9-11/16"	4-9/16"	11 lbs	3337.50
615518	60.3STA	2.20	4.80	14.40	9-1/8"	9-11/16"	4-9/16"	12 lbs	4012.50
615519	70.2STA	5.70	18.50	-	9-7/16"	10-1/16"	4-1/2"	12 lbs	4275.00
615520	70.3STA	2.30	5.70	18.50	9-7/16"	10-1/16"	4-1/2"	13 lbs	6075.00
615521	80.2STA	9.40	28.10	-	11-5/16"	12-9/16"	6-7/16"	22 lbs	6866.25
615522	80.3STA	2.23	9.40	28.10	11-5/16"	12-9/16"	6-7/16"	23 lbs	7629.00

Todd Lightweight T-Top Electronics Box

- Stainless Steel hardware
- Smoked plexiglass front panel
- Rubber gasket
- Chrome key lock



SMALL

- Front Panel: 20-1/2"W x 6-1/4"H
- Inside: 23-1/4"W x 9-3/4"H x 13"D
- Outside: 24"W x 14"H x 14"D

Item	Model	Ship	Net
252601	95-1925	28 lbs	\$329.99

LARGE

- Front Panel: 29"W x 8-3/4"H
- Inside: 31-1/2"W x 11"H x 15-3/4"D
- Outside: 32"W x 11-1/4"H x 16-1/2"D

Item	Model	Ship	Net
252602	88-1924	45 lbs	\$349.99

EVO Manual Winches

The EVO winch is a development that contains years of knowledge and understanding of what boat builders and sailors want. No compromises have been made in terms of quality or integrity of design.

- Easy servicing - No tools required
- User friendly direction arrows
- "FAST FIT" stud fixings
- Convertible to electric
- 7 year warranty



Electric models and conversion kits available at www.defender.com

BLACK OR GRAY ALLOY (please specify)

Item	Model	Speed	Gear Ratio	Base Dia."	Line Size"	Ship	M.A.P.
615299	15ST	1	2:1/4.2:1	5-7/16	5/16-1/2	7 lbs	\$540.00
615299	30ST	1	2:1/4.2:1	5-7/16	5/16-1/2	10 lbs	1020.80
615301	40ST	2	1.9:1/5.8:1	5-13/16	5/16-1/2	11 lbs	1020.80
1405.60	45ST	2	2.4:1/7.6:1	6-5/8	5/16 -9/16	16 lbs	1405.60
615305	50ST	2	2.6:1/9:1	7-1/8	5/16-9/16	20 lbs	1927.20
615307	55ST	2	2.8:1/11.2:1	8-1/16	5/16-5/8	27 lbs	2674.40
615309	65ST	2	3.1:1/14.8:1	9-1/8	5/16-11/16	37 lbs	3893.60

CHROMED BRONZE

Item	Model	Speed	Gear Ratio	Base Dia."	Line Size"	Ship	M.A.P.
615298	15ST	1	2:1/4.2:1	5-7/16	5/16-1/2	9 lbs	\$598.40
615300	30ST	1	2:1/4.2:1	5-7/16	5/16-1/2	13 lbs	912.00
615302	40ST	2	1.9:1/5.8:1	5-13/16	5/16-1/2	15 lbs	1120.00
615304	45ST	2	2.4:1/7.6:1	6-5/8	5/16 -9/16	22 lbs	1504.80
615306	50ST	2	2.6:1/9:1	7-1/8	5/16-9/16	27 lbs	2040.00
615308	55ST	2	2.8:1/11.2:1	8-1/16	5/16-5/8	38 lbs	2896.80
615310	65ST	2	3.1:1/14.8:1	9-1/8	5/16-11/16	53 lbs	4138.40

Geostat Rogue Wave WiFi Bridge and Converter

The Rogue Wave is an Ethernet Converter (EC) so a direct connection can be made to any Ethernet enabled device. There is no software to install and no power robbing USB connections. Its small size makes it ideal for wireless Internet access on a smaller boat or an RV. It can also be used with variety of remote mount, 2.4 GHz omni-directional antennas.



- PoE injector for 110 / 220VAC to 12VDC operation
- 800mW (+29dBm) output power
- Easy to use web-based Wave WiFi Interface
- FREE Online Firmware Upgrades and iMap™ Global Weather
- 2.4 GHz, 9dB rubber duck omni-directional antenna
- 25 ft. Ethernet cable and 2 ft. Ethernet jumper cable
- Up to 7 mile range from a quality HotSpot
- Instructional CD and Quick Start Guide
- One year written limited warranty
- Optional - 8dB omni-directional antenna and rail mount

Please specify: 110/220VAC or 12VDC

Item	Model	Ship	Net
252575	ROGUEWAVE	2 lbs	\$369.99

Rogue Wave WiFi Bridge & Converter Kit

A DEFENDER EXCLUSIVE!

- Includes (2) Antennas - 2.4 GHz, 9dB Rubber Duck Omni-Directional antenna & the 8dB Omni-Directional Antenna and Rail Mount Clamps
- 800mW (+29dBm) output power
- Includes PoE injector for 110 / 220 Volt AC or 12 Volt DC operation (Specify Voltage)
- 25-foot Ethernet cable
- 2-foot Ethernet jumper cable
- Instructional CD and Quick Start Guide
- Easy to use web-based Wave WiFi Interface
- FREE Online Firmware Upgrades
- FREE iMap™ Global Weather
- Up to 7-mile range from a quality HotSpot
- One year written limited warranty
- Optional - PoE adapter for conversion from 12 to 24 Volt DC operation is available

Please specify 110 volt or 12 volt.

Item	Ship	Net
258136	3 lbs	\$456.99

Suunto Yachtsman Watch

- Multitude of useful functions including time, calendar, dual time, alarms, stopwatch and countdown timer
- Compass and Barometer
- Water resistant to 30 m/100 feet
- Sailing timer with audible warning sign (maximum countdown of 120 minutes)
- User replaceable 3 Volt Lithium cell battery type CR2430



Item	Model	Description	Ship	Net
150316	SPSEQ51	Metal housing	1 lbs	\$329.99

Suunto Regatta Watch

- Multitude of useful functions including time, calendar, dual time, three daily alarms, stopwatch, and countdown timer
- Compass and Barometer
- Water resistant to 30 m/100 ft
- Sailing timer with audible warning signals (maximum countdown of 120 minutes)
- User replaceable 3 Volt Lithium cell battery type CR2430



Item	Model	Description	Ship	Net
150317	SSI091021010	Light plastic housing	1 lbs	\$184.99

Suunto M3 Wristop Computer/Watch

- Multiple watch, date and alarm functions
- Water resistant to 30 m/100 ft
- Sailing timer adjustable from 1 to 99 hrs
- Advanced sailing timer with synchronization and smart repeat
- Countdown timer lock to prevent accidental off sync
- User configurable audible countdown alarms
- Independent chrono in addition to countdown timer
- Large countdown numbers and time of day
- User replaceable Lithium cell battery type CR2032



Item	Model	Description	Ship	Net
150318	SSI11847310		1 lbs	\$184.99

Suunto KB20 Handheld Compass

- Excellent hand bearing compass for marine and land uses
- Graduation interval 1°
- Scale: 0-360°
- Damping liquid
- Jeweled bearing
- Optical adjustment
- Lanyard
- Waterproof and floats
- Available for 5 geographic balancing zones
- 2 year warranty



Item	Model	Description	Ship	Net
150319	SS002110011	Yellow, Plastic casing	1 lbs	\$59.99

Maretron Mini Double-Ended Cordset

Double-ended cordsets are used for trunk or drop lines and make for a secure connection and simple timesaving installation. The connectors are keyed for error-free connection and are waterproof for continued operation even while submerged in the bilge.

- Rugged, IP68 rated connectors for continued connection integrity in marine environment
- Various cable lengths to match installation requirements
- Current Rating: 9.0 Amps
- Voltage Rating: 300 Volts



Item	Model	Length Ft	Meters	Ship	Net
258199	NM-NG1-NF-00.5	1.64	.5	1 lbs	\$32.99
258200	NM-NG1-NF-01.0	3.28	1	1 lbs	34.99
258201	NM-NG1-NF-02.0	6.56	2	1 lbs	39.99
258202	NM-NG1-NF-03.0	9.84	3	2 lbs	43.99
258203	NM-NG1-NF-04.0	13.12	4	2 lbs	47.99
258204	NM-NG1-NF-05.0	16.40	5	2 lbs	52.99
258205	NM-NG1-NF-06.0	19.68	6	3 lbs	56.99
258206	NM-NG1-NF-07.0	22.96	7	3 lbs	61.99
258207	NM-NG1-NF-08.0	26.25	8	3 lbs	66.99
258208	NM-NG1-NF-09.0	29.53	9	4 lbs	69.99
258209	NM-NG1-NF-10.0	32.81	10	4 lbs	74.99

Maretron Mini Bulkhead Feed-Thru

The Bulkhead Feed-Thru allows ease of installation through panels or bulkheads and establishes future connection points in a network installation.

- Maintains the integrity of watertight bulkheads by providing a waterproof seal and connection
- Features rugged keyways for positive alignment of connections
- Waterproof rated to IP67



Item	Model	Description	Ship	Net
258210	BHF-NM-NF	Bulkhead Feed-Thru	1 lbs	\$45.94

Maretron Mini 90° Male To Female Connector

The Mini Elbow is used in spots where it is impossible to bend a cordset around tight corners. The elbow easily connects to a tee or double-ended cordsets making 90° turns practical at the end or anywhere along the line.

- Mounting hole for secure fastening of cabling system
- Waterproof seals for reliable connections
- Nickel plated brass ideally suited for harsh marine environment



Item	Model	Description	Ship	Net
258211	ELB-NM-NF	Mini Male to Female	1 lbs	\$34.21

Maretron Mini Field-Attachable Connector

Field-attachable connectors allow you to make field connections to bulk cable.

- Color-coded screw terminals match the individual wire colors found within the bulk cables for error-free field installation
- Rugged housing material designed to withstand harsh marine environments



Please specify: Male or female

Item	Description	Ship	Net
258212	Mini Field-Attachable	1 lbs	\$27.37

Maretron Mini Cap

Used to cover male or female connectors.

Please specify: Male or female cap



Item	Description	Ship	Net
258213		1 lbs	\$8.99

Maretron Mini Powertap With Fuses

A Powertap is connected to a network backbone just like any Tee but rather than connecting a device, its purpose is to provide "bus" power. Typically a Powertap is placed as centrally as possible between total devices on backbone.

- Uniquely provides two power inputs permitting doubled power provision for devices
- Connects power supply to NMEA 2000® Trunk Line in convenient plug/play fashion
- Replaceable fuses to protect bus and connected components from excessive current



Item	Model	Description	Ship	Net
258214	NF-NM4P-NF	Mini Powertap	2 lbs	\$189.99
258216	NM4P-01	Mini Powercord Female to pigtail, 3.28'	1 lbs	30.99
258217	NM4P-05	Mini Powercord Female to pigtail, 16.4'	2 lbs	40.99

Maretron Mini Male To Micro Female Reducer

The reducer is used to change from a Mini cable to Micro or Mid cable. For example, one end of the network might be terminated at the top of the mast but it may not be desirable to run a Mini trunk cable up the mast. In this case, you can switch over to Micro or Mid cable at the base of the mast using the reducer and continue up the mast with Micro or Mid cable.

- Corrosion resistant Nickel plated Brass
- Weatherproof to IP67



Item	Model	Description	Ship	Net
258215	NM-CF	Reduces Mini Backbone to Micro/Mid Cable	1 lbs	\$34.99

Maretron Mini Gender Changer

Cables have a male connector on one end and a female connector on the other end. Normally, the male connector points back towards the network power supply, but on some occasions, this gets reversed and a gender changer can be used to get back to the desired connector type.

- Waterproof seals for reliable connections
- Easily swap connector gender to get back to desired connector type



Please specify: Male/Male or Female/Female

Item	Description	Ship	Net
258218	Changes cable end to opposite gender	1 lbs	\$34.99

Maretron Mini/Micro Tees

Used to tap into the trunk line for adding a drop connection. Two Mini Tees are available:

- 1) Mini Tee with Mini connectors for the trunk and drop lines,
 - 2) Mini/Micro Tee with Mini connectors for the trunk lines and a Micro connector for the drop line
- Gold Contacts for greatest reliability
 - Keyed connectors for error-free connections

Please specify: Mini Tee or Mini/Micro Tee

Item	Ship	Net
258219	1 lbs	\$25.99



Maretron Mini Termination Resistor (Female/Male)

Termination Resistors are required on a NMEA 2000® network and are placed at each end of a network trunk cable. Like the double-ended cordsets, the termination resistors are waterproof and continue to function even while submerged in the bilge.

- Diagnostic versions indicate correct polarity at a glance to ensure power connections have been made properly
- Screw connector for positive connection
- Termination resistors are used to terminate both ends of the trunk line

Please specify: Mini Termination Resistor- Female or Male
Mini Termination Resistor with LED Indicator- Female or Male

Item	Description	Ship	Net
258220	Mini Termination Resistor	1 lbs	\$9.49
258221	Mini Termination Resistor with LED Indicator	1 lbs	20.99



Durasafe Trailer Coupler Connect™

This innovative accessory will take away the problems associated with trying to hook up a trailer. No more dinged bumpers, repeated attempts or potential arguments with your helper. It locates the trailer coupling directly over the ball without the need of assistance. The Coupler Connect installs in minutes, and can be used as a wheel chock when you're not hooking up.

Features:

- With the Coupler Connect, hooking up to a trailer takes just second
- No assistance or physical effort is required
- No need to continually get in and out of the vehicle to check on position
- Coupler Connect guides your trailer coupler directly over your tow ball every time
- Made of zinc-plated steel for durability
- Aligns coupler directly over tow ball
- Two-piece construction: Mounting bracket and Guide plate
- Prevents damage to vehicle
- Fitted in minutes
- Saves time on every backup
- Does not require a line of sight out back window
- Bracket fits standard 1" diameter ball shank
- Patent Pending
- Made in the U.S.A.

Item	Model	Description	Ship	Net
001653	CC001	Trailer Coupler Connect™	9 lbs	\$34.99



COUPLER CONNECT™ PLUS PROTECT

Offers the same advantages as the Coupler Connect plus mounting bracket, guide plate and hold down device.

001654	CCP200	Coupler Connect™ plus Protect	10 lbs	46.99
001655	CC900	Extra Base Plate	3 lbs	16.99

Cobra Cigarette Plug Adapter/Power Cord

This handy accessory will let you plug the Cobra MR F300 Bluetooth® Wireless, waterproof handset into a cigarette lighter socket. Now you can easily transfer your Bluetooth handset from boat to boat or even use it in a vehicle!

Item	Model	Description	Ship	Net
258231	CM 140-002	12VDC	1 lbs	\$18.25



Weems & Plath Sure Shine

Weems & Plath polish has been specially formulated for the marine industry. A one step application cleans, polishes, and protects with a coating designed to last 3 to 6 months.

- Contains no harsh acids, caustics, or abrasives
- Use safely on: Brass, Bronze, Copper, Stainless Steel, Aluminum, Pewter, Nickel, Sterling Silver or Silver plate
- Cleans and deoxidizes fiberglass; removes cloudiness from Plexiglas, clear vinyl, eisenglass or lexan

Item	Model	Description	Ship	Net
G 752632	633	6 oz. jar	1 lbs	\$12.99



Trident Barrier Lined B1-15 Fuel Hose

EPA approved for both gasoline (petrol) and diesel, including ethanol blends up to E85. Exceeds ABYC H-24, SAE J1527, ISO 8469 B1 and USCG type B1-15; CARB and EPA low permeation. NMMA type accepted and CE certified. Sold by the foot.

- (2) Spiral reinforcement and "Barrier Liner" so fuel is not in direct contact with rubber
- Extremely flexible and resistant to aging, heat, cold, ozone and fuel permeation
- 3 Year warranty

Item	Model	Color	Size/ID	Ship	Net
300516	305-0140	Gray	1/4"	1 lbs	\$1.99
300517	305-0560	Gray	5/16"	1 lbs	1.99
300518	305-0380	Gray	3/8"	1 lbs	2.29



Trident XHD Bilge Pump/Livewell Hose

For XHD bilge, live well, drain, scupper lines, etc. and approved for below waterline. Sold by the foot.

- Smooth extra heavy wall vinyl (FDA) well hose
- Excellent durability, flexibility and bend radius
- No cuffs required
- Operating temperatures +10° to +140°F (-12° to +60°C)
- 3 Year warranty

Item	Model	Color	Size/ID	Ship	Net
501700	147-0580	Clear with Black helix	5/8"	1 lbs	\$1.49
501701	147-0340	Clear with Black helix	3/4"	1 lbs	1.89
501702	147-1000	Clear with Black helix	1"	1 lbs	2.09
501703	147-1180	Clear with Black helix	1-1/8"	1 lbs	2.49
501704	147-1140	Clear with Black helix	1-1/4"	1 lbs	2.99
501705	147-1120	Clear with Black helix	1-1/2"	1 lbs	3.99



CLAMP-ON ANODIZED ALUMINUM ROD HOLDER

- Designed for use with Accessory-Ready clamps & factory-installed male splines
- Accessory-Ready for ease of adjustment & removal
- Stylish tapered design
- Anodized aluminum for weatherability
- Offered in sizes for standard and big game rods
- Easy and quick adjustments made with a standard Allen wrench

755800	F31-2790BXY-1	Accessory Ready Rod Holder	2 lbs	\$68.99
--------	---------------	----------------------------	-------	---------



REMOVABLE T-TOP CLAMP-ON GRAB RAIL

Add an extra level of security and convenience to your boat with this removable Clamp-on T-Top Grab Rail

- Add to T-Top or remove from top as needed
- Adjustable clamp to fit 2 pipe sizes 3/4" & 1" pipe
- 50"L (center-to-center)
- Brushed Finish

755801	T36-1050BSA-1	Aluminum Grab Rail	6 lbs	\$109.99
--------	---------------	--------------------	-------	----------



3-ROD HOLDER AND RACK

- Stylish rod storage
- Brushed aluminum finish rod holders with UV-stabilized high density polyethylene racks
- Pre-drilled for #12 screws
- Slotted to lock-in rods/reels
- Each holder is 12" long, with a 1.9" dia. tube

755802	F31-3003BSA-1	3-Rod Aluminum Holder & Rack	4 lbs	\$99.99
--------	---------------	------------------------------	-------	---------



3-ROD STAINLESS STEEL ROD HOLDER

- Rod-tip spring design securely locks rods in position
- Pre-drilled recessed mounting holes
- Beveled edges for clean, attractive look
- UV-stabilized polyethylene

755803	F16-2753-1	3-Rod S/S Holder	3 lbs	\$109.99
--------	------------	------------------	-------	----------



ADJUSTABLE TRANSOM MOUNT ROD RACK

- Brushed anodized aluminum for long-lasting performance & beauty
- Mounts to transom to maximize on-board rod storage
- Frees up gunnels providing more working space
- Adjust rack angle to fit any boats transom
- Easy bolt-on installation

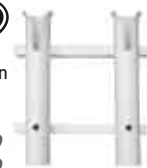
755804	F31-3503BSA-1	Aluminum 3-Rod Rack	8 lbs	\$149.99
--------	---------------	---------------------	-------	----------



POLY FISHING ROD RACKS

- Built to withstand the marine environment
- Flared rod holder offers easy rod handling and rod holder slots lock in most conventional and spinning outfits
- Deluxe racks feature integrated knife and pliers holders

755812	P03-062B	2-Rod Poly Rack, Black	2 lbs	\$19.99
755813	P03-063B	3-Rod Poly Rack, Black	2 lbs	23.99





LUMA LED BRIGHT STICK WITH CHARGER & ADAPTER

- Includes AC/DC charger & lighter adapter
- High output, low glare
- Vibration & shock-resistant LEDs
- Impact-resistant & water resistant
- Rechargeable Ni-Mh battery
- Operates 3+ hours on a single charge
- 108 LEDs provide high output, low glare light
- 100,000-hours of operation
- Versatile mounting clips for use with magnets or suction cups
- Thru-bolt mounting option
- Ideal for use on windshields, gunnels & tops, in lockers & hatches, or on hulls for shrimping



NEW!

701108 F38-2020-1 LUMA LED Bright Stick 2 lbs \$79.99

LUMA LED T-TOP LIGHT

- 108 LEDs provide high output, low glare light
- Switch from white light to red light for chart-reading
- Impact-resistant Polycarbonate lens
- Polished anodized aluminum housing
- Pre-Drilled for easy mounting
- Mounting clips included for easy installations
- 18' wiring cable to accommodate most tops & bridges



NEW!

701109 F38-2050-1 LUMA LED T-Top Light 1 lbs \$109.99

LUMA LED TUBE LIGHT

- Mounts easily to T-tops with tie-wraps or velcro straps
- Highly efficient, designed to operate for 100,000-hours
- Has white light for maximum lighting & red light for night vision
- 18' length of safe shielded cable is great for use on tops, bridges and towers of all sizes
- 108 LED lights
- Light tube & connections are sealed
- Polycarbonate lens
- Draws less than 1/4 Amps



NEW!

701110 F38-2060-1 LUMA LED Bright Stick 2 lbs \$59.99

LUMA LED DEEP DROP / FLOAT LIGHT

- Waterproof tube for use underwater to 100' deep
- Float it on the surface or add a weighted line for deep drop use
- Green light enhances fish activity in salt & fresh water
- 108 LEDs high output, low glare light
- Remove caps & water-tight tube for charging
- Vibration & shock-resistant LEDs
- Rechargeable Ni-Mh battery
- Operates 3+ hours on a single charge
- Includes AC/DC charger & lighter adapter



NEW!

701111 F38-2090-1 LUMA LED Drop Light 3 lbs \$99.99

LUMA LED WORK LIGHT

- 17-1/2" Long cordless LED work light
- High output, low glare LED lights
- Includes an AC/DC charger & lighter adapter for charging
- Vibration & shock-resistant LEDs
- Less than 1/4 amp draw
- Impact-resistant & water resistant ideal for marine & other outdoor uses
- 60 LEDs provide high output, low glare light
- Long 100,000-hour operating life
- Operates 3 Hours+ on a single charge
- Attractive & rugged blue sure-grip housing
- Swivel stainless steel hook for hands-free operation
- Ideal for use in engine compartments, hatches, T-tops, towers, & outdoor applications

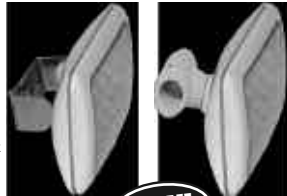


NEW!

701112 F38-2500-1 LUMA LED Work Light 1 lbs \$45.99

LUMA LED DECK LIGHT

- 30 LEDs provide high output, low glare light
- Hard Wired
- Vibration & shock-resistant LEDs
- Less than 1/4 amp draw
- Won't drain battery
- Impact-resistant & water resistant ideal for marine & other outdoor uses
- Attractive, low profile design
- High-impact Polycarbonate lens
- White, UV & impact-resistant housing
- Water resistant



NEW!

701113 F38-3500WHA-1 LUMA LED Deck Light with S/S Bracket 1 lbs \$54.99

701114 F38-2521WHA-1 LUMA LED Deck Light with clamp for rails 7/8" - 1" 2 lbs \$69.99

SEMI-RIGID RUB RAIL KIT

Taco Semi-Rigid rub rail is flexible, durable and packaged in continuous coils for one-piece installation without seams. White with flexible Chrome insert.

755814 V11-9811WCM70-2 Semi Rigid Rubrail, 70' 28 lbs \$399.99

Garmin AIS™ 300 Receiver

NEW!



- Aids mariners in navigation and collision avoidance by integrating a CPA alarm when connected to a compatible chartplotter
- NMEA 2000 certified for easy installation
- Built-in passive splitter enables one VHF antenna to serve for both the AIS 300 and any VHF radio
- Integrate AIS target data information directly on the chartplotter display
- When integrated with a compatible Garmin chartplotter I and VHF 200 or VHF 300 series radio via NMEA 2000, mariners can initiate a call to any MMSI target directly from the chartplotter by selecting the Call With Radio function
- Dual channel AIS receiver with Class A and Class B reception
- NMEA 0183 output with selectable high/low speeds
- Compatible with 12VDC and 24VDC boat systems
- Waterproof: IPX7 – submersible

Item	Model	Dimensions	Ship	Net
258198	010-00892-00	8.2"W x 5.5"H x 1.8"D	2 lbs	\$369.99

Extra-Low Output LPG (Propane) Conversion Control Valve

NEW!



For pre-regulated, low pressure, LPG (propane) systems. These stainless steel and brass control valves are designed to connect to the low pressure side of the regulator. Fits the Magma Trailmate Gas Grill as a LPG Low Pressure Control Regulator. This unit allows the Trailmate Gas Grill to be used with a conventional LPG tank (like your home gas grill tank). In order to complete the conversion to a standard LPG tank (as opposed to the screw on disposable LPG cylinders) a Low Pressure Conversion Kit (10 foot hose) is required (lengths of hoses and therefore part #'s may vary).

Note: Hose and additional fittings are not included, but can be purchased separately

Item	Model	Ship	Net
402210	A10-219	1 lbs	\$29.99

Flir HM-324XP Series Thermal Imaging Cameras

NEW!



- FirstMate gives you the power to see more and to see farther than every other night vision technology around
- See clearly in total darkness
- See logs, rocks, land, and other hazards that radar can miss
- Boat with confidence at night knowing that you can see harbor entrances and navigation channels in total darkness
- First Mate can help you see people in the water better than any other night vision technology.
- First Mate can be mounted on your boat or held in the palm of your hand
- Long battery life; no vessel power supply required
- Instant-on for images when you need them
- Improved security while sitting at anchor or docked for the night
- 24-Hour Vision - See more all day, all night

Package Includes:

- First Mate HM-324 XP or HM-324 XP+ Handheld NTSC Thermal Imager with 320 x 240 pixel thermal microbolometer
- Hotshoe video output and charging accessory,
- (4) Rechargeable AA NiMH batteries (Can be used with Li-Ion and Alkaline as well)
- AC power adapter / charger
- 12 Volt car adapter / charger
- Neck lanyard
- Operator's Manual
- USB cable and Video output cable
- 2X E-Zoom
- SD Slot and SD Card for still and video image storage

Item	Model	Description	Ship	M.A.P.
258232	432-0004-05-00S	HM-324 XP Still Images Only	10 lbs	\$4999.00
258233	432-0004-07-00S	HM-324 XP+ Still Images + Video	10 lbs	5999.00



AT 1050



AT 2550



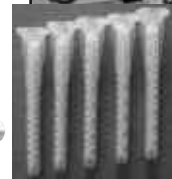
AT 50100



AT 75100



AT 4020



AT 450

Weld Mount System

Weld Mount System parts eliminate the need to drill into composites core which can result in hull and deck delaminations. Adhesively bonded fasteners eliminate the need to drill and tap when used on metal surfaces. Weld Mount fasteners are great for mounting electronics, wire runs, bilge applications and firewall wiring. Weld Mount System fasteners save both time and money, it's easy to use, it eliminates drilling and they are much stronger than traditional methods. Step By Step Instructions included with all kits.

Item	Model	Description /Contents	Ship	Net
Basic Wire Tie Mounting Kit				
Ⓞ 755780	AT 1050	25 pc. AT-5 White Tie Mount, 1 pc. (30ml) AT-1030 Acrylic White Adhesive, 2 pc. AT-550 Mixing Sticks. Sets in 12 minutes and is heat resistant to 250°- glue shelf life is 1 year when stored at 72° or below.	1 lbs	\$20.99
Manual Mix Wire Tie Kit				
Ⓞ 755781	AT 25500	50 pc. AT-5 White Tie Mount, 25 pc. AT-3 White Tie Mount, 1 pc. AT-4020 White Adhesive, 1 pc. AT-500 Pusher Rod, 2 pc. AT-525 Mixing Sheet, 4 pc. AT-550 Mixing Sticks. Sets in 10 minutes and is heat resistant to 280°- glue shelf life is 1 year stored at 72°.	2 lbs	68.99
Complete Wire Tie Kit With Gun				
Ⓞ 755782	AT 50100	100 pc. AT-5 White Tie Mount, 50 pc. AT-3 White Tie Mount, 1 pc. AT-4020 White Adhesive, 5 pc. AT-450 Mixing Tips, 1 pc. AT-300 Adhesive Gun. Sets in 10 minutes and is heat resistant to 280°- glue shelf life is 1 year stored at 72°.	2 lbs	145.99
Standard Start-up Kit				
Ⓞ 755783	AT 75100	20 pc. AT-5 White Tie Mount, 10 pc. AT-3 White Tie Mount, 3 pc. AT-113 Strap Mount, 5 Pc ST 125-1420-16 Stainless Studs, 5 pc. PS62-832-12 Stainless Panel Studs, 1 pc. AT-4020 White Adhesive, 5 pc. AT-450 Mixing Tips, 1 pc. AT-300 Adhesive Gun.	2 lbs	112.99
AT-White 4020 Adhesive				
Ⓞ 755784	AT 4020	Cures in 10-12 minutes and has working strength within 30 minutes. 1 year shelf life when stored at 72°. Packaged in a 50ml cartridge and can be mixed by hand or by using the AT-300 gun and mixing tips. The 50ml cartridge will bond 100 -150 parts.	1 lbs	27.99
AT White 2010 Adhesive				
Ⓞ 755785	AT 2010	High viscosity and cures in 5 - 6 minutes with a 4 minute working or open time and develops working strength in 15 -20 minutes. This makes AT-2010 the ideal adhesive for applications which require an immediate high strength bond. AT-2010 has a 6 month shelf life when stored at 72°. Packaged in a 50ml cartridge and can be mixed by hand or by using our AT-300 gun and mixing tips. The 50ml cartridge will bond 150 - 200 parts.	1 lbs	28.99
AT 450 Mixing Tips- Each package contains 10 tips				
Ⓞ 755786	AT 450	3.5" Bayonet mixing tip reduces waste and accurately mixes adhesives. These tips are disposable and will need to be replaced once adhesive begins to cure. Note: Do not try to force cured adhesive through tip.	1 lbs	12.99

Dr LED Polar Star 40 24v Tri Color

- 2nm Visibility
- Tri-Color (White, Red, & Green)
- Low Power Draw, ~1W (Non-Polarized Connection)
- Built-In Energy Management Circuit Since 2004
- Direct Bulb Replacements for Most Nav Lights
- Long Service Life
- Ultra-Rugged with No Filament to Burn Out or Break



NEW!



NEW!

Item	Model	Ship	M.A.P.
701129	8001436	1 lbs	\$49.99

Dr LED GE90 Star™

LED REPLACEMENT BULB FOR ANCHOR LIGHTS

The GE90 Star is specially designed as as direct incandescent bulb replacement for the very popular #90 incandescent bulb used in many Perko (Bulb Fig. 0337) and others anchor lights. This bulb is fabricated from the highest quality components to assure long life and trouble-free functioning. Their patented internal circuitry provides consistent brightness and makes them immune to life-shortening voltage fluctuations. Their incredibly low power draw (~1W) makes them the perfect way to reduce energy consumption.

- 2nm Visibility, Multi-Voltage 12/24 VDC, High-Flux LED
- Single Color White BA15D #90 Bulb
- Low Power Draw, ~1W (Non-Polarized Connection)
- Built-In Energy Management Circuit Since 2004
- Direct Bulb Replacements for Many Anchor Lights
- Long Service Life
- Ultra-Rugged with No Filament to Burn Out or Break

Item	Model	Ship	M.A.P.
701131	8001627	1 lbs	\$43.99

LED Replacement Bulbs for Aqua Signal Series 25 by Dr LED

- 2nm Visibility
- Bi-Color (Red & Green)
- Low Power Draw, ~1W (Non-Polarized Connection)
- Built-In Energy Management Circuit Since 2004
- Direct Bulb Replacements
- Long Service Life
- Ultra-Rugged with No Filament to Burn Out or Break



NEW!

Item	Model	Ship	M.A.P.
701132	8001122	1 lbs	\$43.99

Croakies Stealth Floater Eyeglass Retainer

Made of closed cell neoprene and closed cell foam. It has a Level-I CFF which will float smaller plastic frames 40-60 grams and smaller metal frames 20-30 grams. The Croakie Stealth Floater is one of the smaller, sleeker eyewear floatation products, which makes it a nice combination of buoyancy and understatement. neoprene.

- Features:
- High quality washable neoprene
 - Unique backstitch to prevent thread failure
 - 2" of Adjustment on the temple.
 - Small profile
 - Dimensions: 17" Long x 3/4" Wide
 - Made in the USA.



NEW!

Item	Model	Ship	Net
153511	FLTCRSTIHT	1 lbs	\$7.99

Croakies Lycra Suiters Floater Eyeglass Retainer

Made of non absorbent lycra and closed cell foam. It has a Level-I CFF which will float smaller plastic frames 40-60 grams and smaller metal frames 20-30 grams. The Lycra Suiter Floater is one of the smaller lightweight eyewear floatation products, which makes it a good combination of buoyancy and comfortable wearability. The soft slider foam ring can be snugged tight to your head for even greater eyewear security in action situations.

Features:

- Non absorbent lycra fabric and closed cell foam
- Soft, closed cell foam slider
- High quality washable, non-absorbent
- Quick dry Lycra
- Closed cell foam
- Adjustable soft foam bead
- Dimensions: 28" Long x 1/2" Wide
- Made in USA



NEW!

Item	Model	Ship	Net
153512	FLTLIHT	1 lbs	\$6.49

Croakies Print Suiters Eyeglass Retainer

- Made up of detailed, colorful, and original prints.
- 14" Long (each side) x 1/2" wide
- 100% cotton - Colorfast, washable
- Adjustable length
- Fits medium frames
- Washable
- Made in the USA
- Fits medium frames
- Secure
- Comfortable



NEW!

Please Specify: Northern Gamefish black, Urban Camo Green or Urban Camo Black

Item	Model	Ship	Net
153513		1 lbs	5.99

Croakies Cotton Suiters Eyeglass Retainer

- 14" Long (each side) x 1/2" wide
- 100% cotton - Colorfast, washable
- Adjustable length
- Fits medium frames
- Washable
- Made in the USA
- Fits medium frames
- Secure
- Comfortable



NEW!

Please Specify: Black, Navy, Royal Blue or Red

Item	Model	Ship	Net
153514		1 lbs	4.99

Croakies Terra Middi Floater Eyeglass Retainer

Made of high strength climbing rope and closed cell foam. It has a Level-I CFF which will float smaller plastic frames 40-60 grams and smaller metal frames 20-30 grams. The Terra Middi Floater is Croakies thinnest eyewear cord combined with the smallest floatation rings.

Features:

- Thin, smooth climbing rope
- Rope is 24" long and 1/6" wide
- Foam floatation rings are 3/4" diameter
- Tough climbing rope with adjustable soft slider bead
- Closed cell foam floatation rings
- MIDDi style ends
- Small profile
- Washable
- Made in USA



NEW!

Item	Model	Ship	Net
153515	FLTTMIHT	1 lbs	6.99

Croakies Terra Spec Cord Eyeglass Retainer

- Made of durable climbing rope
- Adjustable
- 12" Long (each side) by 3.2mm (diameter)
- Tough, woven climbing rope
- Comfortable & fun cord
- Colorfast, washable
- Made in the USA

Please Specify: Black, Navy, Royal Blue or Brown

Item	Model	Ship	Net
153516		1 lbs	3.99



NEW!

Croakies Tite End Cord Eyeglass Retainer

- 12" long (each side) by 3.2 mm (diameter)
- Tite End™ fits most frames
- Tough woven climbing rope
- Adjustable black bead
- Washable
- Made in the USA

Please Specify: Black, Navy, Royal Blue or Brown

Item	Model	Ship	Net
153517		1 lbs	3.99



NEW!

Croakies Lid Latch

Keeps your cap from flying away. Throw caution to the wind, but not your hat! Made from strong climbing rope and nickel coated clips; the Croakies Lid Latch will keep your hat on your head, not blowin' in the wind.

Features:

- Strong climbing rope
- Metal clips
- Clips your hat to your collar
- 8-3/4" Long by 3.2 mm diameter
- Made of tough climbing rope
- Strong metal bulldog clips
- Washable
- Made in USA

Please Specify: Black, Navy or Light Camo

Item	Model	Ship	Net
153518		1 lbs	3.99



NEW!

Jabsco Automatic Water System Pump

Features:

- Smooth Flow
- Self-Priming up to 10 feet (3m)
- Dry running capability
- Soft noise absorbing mounts
- Snap-fit port fittings
- Built-in bypass - less pulsation
- Reduces need for accumulator tank
- Corrosion resistant materials
- Thermal overload protection
- Motor rating: IP 54
- CSA listed
- ISO 8846 MARINE (ignition protection)



NEW!

Specifications:

- Volts: 12 DC
- Amp Draw: 4.4 Amps @10 PSI
- Fuse: 10 Amp
- Open Flow: 2.9 GPM
- Max PSI: 50 PSI
- (2) 1/2"-14 Male pipe thread
- (2) 1/2" (13 mm) Hose Barbs
- Dimensions: 4-3/4" H x 6" W x 9" L
- Weight: 3.5 lbs

Item	Model	Ship	Net
501330	31395-0092	4 lbs	\$79.99

CATEGORY • Sub-Category

PHONE 800-628-8225 • FAX 800-654-1616