

a Series

Compact ▶ Full-Function ▶ Multifunction Displays



INNOVATION • QUALITY • TRUST

Raymarine®



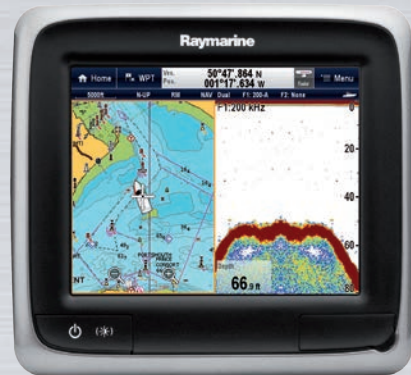
Powerful, go-anywhere, navigation; a-Series multifunction displays deliver the speed and simplicity of Raymarine technology in a sleek 5.7" touch screen display

a65

The perfect choice for chartplotting and networking

a67

All features of the a65 plus built-in ClearPulse digital sonar



Split-screen chart and sonar



Optional SIRIUSXM Weather and Radio



Radar* with on-screen controls

* Radar antenna required for radar functionality

a Series Multifunction Displays



- Swipe, Touch and Navigate – very simple. Powered by Raymarine’s intuitive LightHouse user interface
- Super Bright LED Technology – sunlight viewable optically-bonded display
- Super-fast dual core processor plus a powerful graphics processor
- Power save mode



Personalize

Create custom navigation pages by dragging and dropping applications to the desired location on the page. The LightHouse user interface also guides you through setup and configuration with an easy to use start up wizard.

Make sure you are up to date with latest features available from www.raymarine.com



CHARTING

- 50 Channel internal GPS sensor
- Charts: a Series MFDs are available with or without Navionics Silver or Gold cartography on microSD cards
- Easy to use; with a simple start up wizard and on-screen user guide
- Powerful waypoint management tools. Search waypoints and favorite routes, and plan routes with a few simple touches



AUDIO

- Pair with your smartphone and control your MP3 music remotely using Bluetooth



SONAR

- A powerful combo – the a67 combines all the navigation capabilities of the a65 with a built in ClearPulse® digital sonar
- Fully automatic ClearPulse digital sonar technology provides uncluttered, highly detailed display of fish and bottom structure
- Powerful 600 Watt digital sonar automatically adapts and adjusts sonar parameters for a clear image of fish and bottom down to 914m (3000ft.)*
- Dual Frequency – 200kHz for shallow water operation and 50kHz for offshore fishing
- Optional Ultra Wide FanBeam 200kHz transom transducer offers 3x the beam width of conventional 200kHz transducers
- Trolling motor ready – optional adapter enables use of Minn Kota's Universal Sonar trolling motor transducer (83kHz)

* Actual depth performance may vary. Sea conditions, temperature and water salinity can affect the maximum depth range of the sonar

NETWORKING

- Fast Raynet Ethernet (SeaTalk^{hs} compatible) port for networking with up to 6 Raymarine MFDs
- Network support for Raymarine Digital radar, HD Color and SHD Color radar, ClearPulse® CHIRP sonar modules
- NMEA2000 and SeaTalk^{ng} connectivity

FUEL MANAGEMENT

- Advanced fuel monitoring with time-to-empty and distance to empty calculations and fuel range rings display overlaid on navigation charts
- Tank level indicators

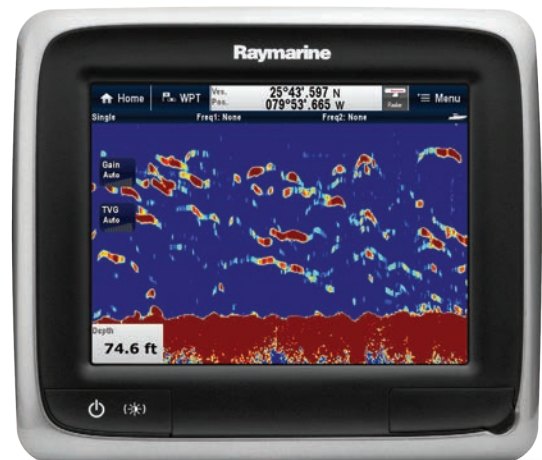


Notes: Radar antenna required for radar functionality.

Chart
Navionics Cartography



Sonar
ClearPulse sonar built-in on the a67



Radar
Optional Digital, HD and SHD Digital Color Radar



It's Extremely Well Connected

Optional
Wi Fi
Built-in

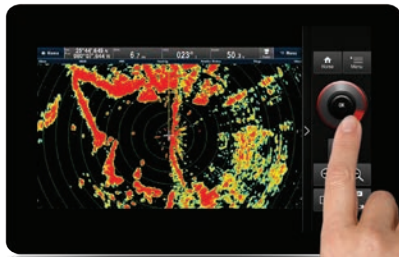


Networking

Network a65/a67 with e Series and c Series MFDs

Optional Wi-Fi and Mobile Apps

a Series displays are available with optional built-in Wi-Fi



Audio

Control your audio with Bluetooth or FUSION link. Full control of FUSION 700 Series Marine Stereos



IP Camera Support (requires ONVIF compatibility)



- 1 Upgrade an a65 with a 1kW DSM300 Sonar, or add a CP450C CHIRP Sonar module for the ultimate in fishfinder technology
- 2 AIS350/AIS650 Automatic Identification System (AIS) modules
- 3 Digital, HD or SHD Color radar antennas
- 4 Autopilots
- 5 Optional Wireless Control. The RCU-3 wireless remote offers simple 3 button control of the MFD using Bluetooth. Wheelmount or lanyard (supplied).

a65/a67 SPECIFICATIONS

Nominal voltage supply: 13.8 v DC

Operating voltage range: 10.2 – 15.6 v DC

Power consumption at full brightness: a65/a67: 9/12W

Power consumption in standby mode: less than 100mW

Operating Temperature range: -10°C to +50°C (14°F to 122°F)

Storage Temperature: -15°C to +65°C (5°F to + 149°F)

Waterproofing standard: IPX6 and IPX7

Display size: 5.7" 144.8mm

Display resolution: 640 x 480 pixels (4:3 format)

Color depth: 24 bit

Viewing angles: 70° left/right/top and 45° bottom

Networking: Up to 6 units

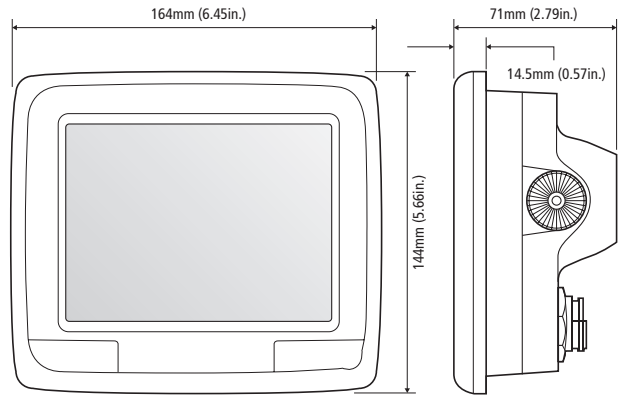
Connections: 1 × Raynet (SeaTalk^{hs}); 1 × SeaTalk^{ng}

Bluetooth: AVRCP 2.1+ EDR power class 1.5

Wi-Fi: Optional built-in Wi-Fi. 802.11 b / g

Cartography: a Series displays can be purchased with or without Navionics charts on microSD cards. Choose models with Navionics Silver or Navionics Gold included. Also support for optional Navionics Platinum charts.

Dimensions (w) x (h): 6.45" x 5.67" (164mm x 144mm)



a65/a67 Dimensions

Safety Notice

Raymarine products are intended to be used as aids to navigation and must never be used in preference to sound navigational judgement. Their accuracy can be affected by many factors, including environmental conditions, equipment failure or defects, and incorrect installation, handling or use. Only official government charts and notices to mariners contain all the current information needed for safe navigation, and the captain is responsible for their prudent use. It is the user's responsibility to use official government charts, notices to mariners, caution and proper navigational skill when operating any Raymarine product.

Content Note

The technical and graphical information contained in this brochure, to the best of our knowledge, was correct as it went to press. However, the Raymarine policy of continuous improvement and updating may change product specifications without prior notice. Therefore, unavoidable differences between the product and this brochure may occur from time to time, for which liability cannot be accepted by Raymarine.

Specifications

All specifications are subject to change without prior notice. Visit www.raymarine.com for the most up-to-date specifications. Some images are for illustration purposes only.

Trademarks

For a list of trademarks, please refer to our website www.raymarine.com

Note: Equipment described herein may require US Government authorisation for export purposes. Diversion contrary to US law is prohibited.

3

FREE WARRANTY UPGRADE FROM 2 YEARS TO 3 YEARS

Raymarine offers a 2 year Limited Warranty (upgradable to 3 years upon product registration) on products installed in vessel use classifications within this brochure, full details of the Global Warranty Policy and how to register your products can be found at www.raymarine.com/warranty. If you require local assistance, please contact a Raymarine certified dealer near you, details of which can be found at www.raymarine.com/dealerlocator.



Raymarine Inc.
9 Townsend West
Nashua
NH 03063
USA
T: 603.324.7900

Connect with Raymarine Online
www.raymarine.com

