

## Defender Boats and Motors Bargain Bin!



Check Out the Deals in the Pages Below...

**Please email [inflatables@defender.com](mailto:inflatables@defender.com) for availability or to place an order. All product sold on a first come first serve basis, and availability is not guaranteed. Sorry, no backorders. All sales are final, no returns or exchanges. Some products may not have a warranty. Product may have visual blemishes or may be out of original packaging. See product description for further details. Representation on this flyer does not guarantee availability as it is not updated real time.**

## Yamaha 50 Hp Cowl

**Sell Price: \$200.00**

Cost for new replacement \$631.81

New engine cowl off a Yamaha F50LA. Abrasions on rear panel of cowling. Part # 6CJ-42610-01-00



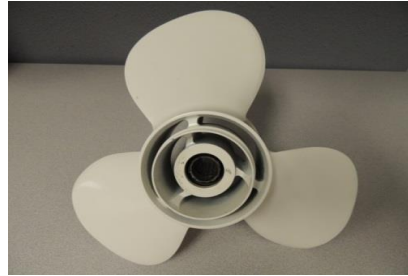
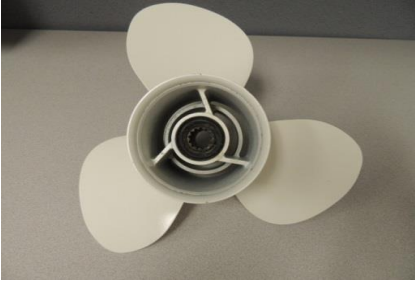
## Yamaha Propeller

**Sell Price: \$95.00**

Brand new dual thrust. T25 aluminum right hand rotation propeller. Pitch 9" Diameter 12 1/4". Part # 68U-45941-00-EL

Fits models- T25, F30, 40, F40, E48, 50, C50, F50, 55, F60

Available (4 ea)



## Evinrude 30 Hp E-Tec Cowl

**Sell Price: \$125.00**

Cost for new replacement \$531.99

Brand new white engine cowl with decals. Part # 285762



## Evinrude 40 Hp E-Tec Cowl

**Sell Price: \$249.00**

Cost of new replacement \$805.99

Brand new white engine cowl with decals. Few scratches on decal. Part # 0285812



## Evinrude 75 Hp E-Tec Portside Cowl

**Sell Price: \$130.00**

Cost of new replacement \$407.13

Brand new white engine cowl. One of the fastening flanges are broken. Incurred freight damage into our facility.

Part # 5008670



## Evinrude 15-30 Hp E-Tec Portside Cowl

**Sell Price: \$150.00**

Cost of new replacement \$307.99

Brand new white engine cowl that incurred freight damage into our facility.

Small gouge (approx 1.5") on side of panel. Engine not included. Will fit 2011 models and newer.

Part # 50008170

L 25 in. x W 9" x H 31"



## Evinrude 15-30 Hp E-Tec Starboard Cowl

**Sell Price: \$150.00**

Cost of new replacement \$307.99

Brand new white engine cowl. Will fit 2011 models and newer.

Part # 5008171

L 28.13 in. x W 12.5 in. x H 25.5 in.





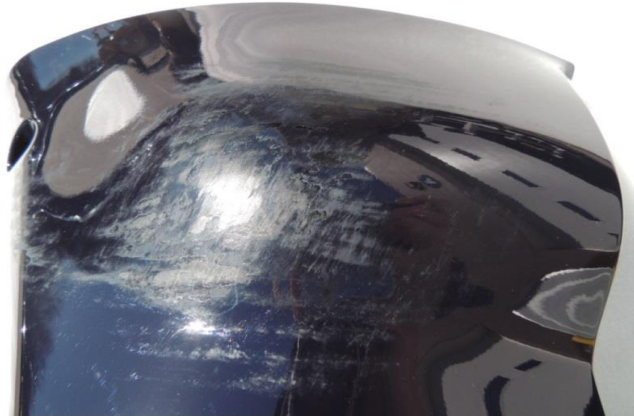
## Tohatsu MFS20C Drive Shaft Housing Cover

**Sell Price: \$50.00**

Cost of new replacement \$163.70

Set of navy blue covers. Starboard cowl badly scuffed. No cracks or chips. Port side cover like new.

Part #'s 3R3Q670031 & 3R3Q67004-1



## Yamaha F60 Top Cowling

**Sell Price: \$450.00**

Cost of new replacement \$618.05

New engine cowl off an F60 that incurred freight damage into our facility.

Small gouge and a small scratch on back panel.

Part # 6C5-42610-51-00



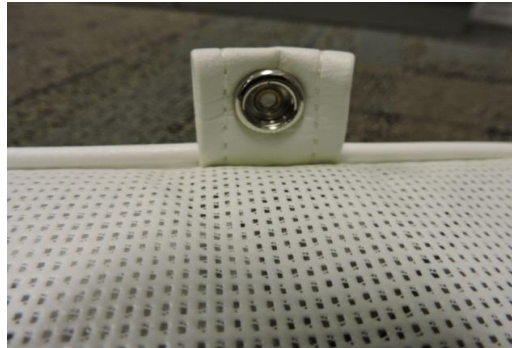
## Mercury White Vinyl Cushion C2

**Sell Price: \$37.00**

Brand new white vinyl cushion with 6 snaps. For inflatable rowing seat.

L 30 in. (76 cm) W 8 3/4 in. H 2 in.

Part # 62-809773



## HYPALON THWART SEAT S10

**Sell Price: \$45.00**

Orange hypalon thwart seat designed to fit between tubes on an inflatable boat.

Provides comfortable and versatile seating at various positions in the boat.

Dimensions: 53 cm L seam to seam x 26 cm W



Alternate model shown for illustration purposes

## Mercury Replacement Seat S1

**Sell Price: \$32.00**

Grey painted wood seat with small nick on top of seat and small gouge under seat.

For Mercury 240 models 2010 and later. DINGHY 200 and 270 models 2010 and later. Will not fit Sport or Air Deck models.

L 27 in. (68 cm) W 8 in.

Part # 8M0046027

Due to differences in production runs, we cannot guarantee the color will match original seat.



## Mercury Replacement Seat S3

**Sell Price: \$35.00**

White fiberglass seat with 3 chips on top of seat.

For Mercury 300 Ocean Runner PVC or Hypalon. 270, 310, and 340 Airdeck Hypalon models. Also, 270 and 310 Sport Hypalon models. 2003 and newer. Fits Quicksilver 290 Oceanrunner.

L 33 in. (85 cm) W 8 in.

Part # 62-809527T08

Due to differences in production runs, we cannot guarantee the color will match original seat.



## Mercury Replacement Aluminum Seat S4

**Sell Price: \$49.00**

Brand new aluminum seat. For Mercury 380 Heavy duty boats and 350 Ocean runners.

L 39 in (100 cm) W 8 in.

Part # 62-809527005

Due to differences in production runs, we cannot guarantee the color will match original seat.



## Zodiac Replacement Bench Seat S5

**Sell Price: \$39.00**

Grey painted wood seat with bracket. 3 minor gauges on edge of seat.

Fits Zoom 260 or 310 models (2009 - present)

L 35.5 in (90 cm) W 8 in.

Part # Z69325

Due to differences in production runs, we cannot guarantee the color will match original seat.





## Caribe C-12 Bench Seat S7

**Sell Price: \$50.00**

White fiberglass seat for Caribe C-12 with velcro attachments. Unused and in good shape, but out of package.  
L 29.5 in. (75 cm) W 9 in.



## Mercury 8 Hp Cowl

**Sell Price: \$99.00**

Cost of new replacement \$404.17

Brand new black engine cowl with decals. Two cracks on front of cowl. Incurred freight damage into our facility.

Part # 8M00744912, 8M0073681, 8M0081473



## Zodiac Cadet 310 AERO Floor F1 2B4C

**Sell Price: \$225.00**

Cost of new replacement \$450.00

Repaired air floor with seam leaks. Passed 24 hr pressure test. Will fit 2015 and 2016 models.

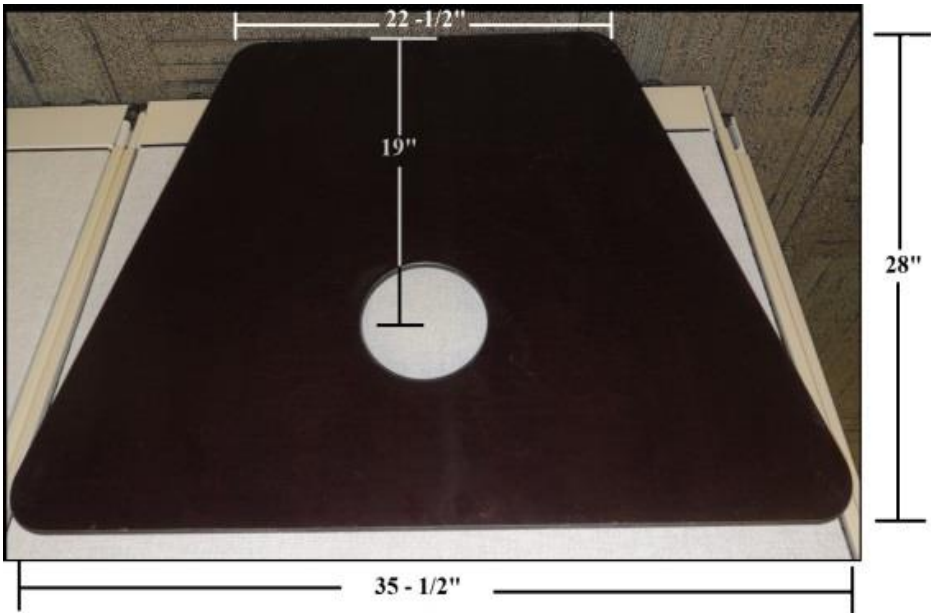
Part # Z69433



**Bow Floor Board F2 BAM**

**Sell Price: \$20.00**

Miscellaneous Wood Bow Floor board. Color is dark brown.

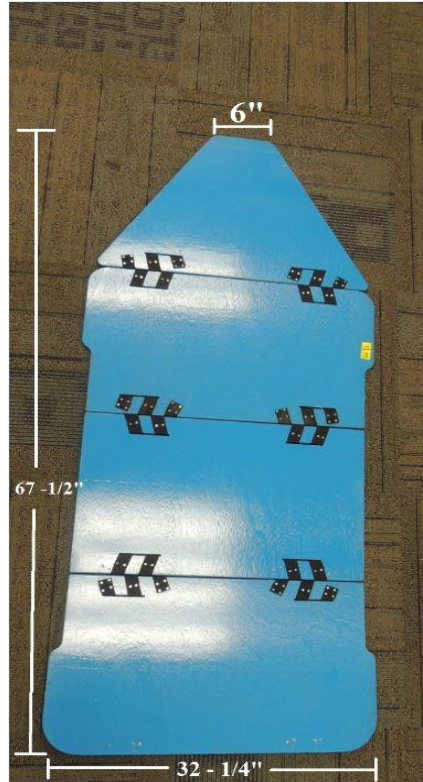


## Dynous Toyo Floor Board Set F3

**Sell Price: \$100.00**

All boards are connected. Color is blue.

Part # FB-32 sku 450790



## Dynous Toyo Floorboard Set F4

**Sell Price: \$100.00**

Four boards with "H" joints attached. Also 2 Stringers included. Color is yellow

Part # FB-35 Sku 456142



## Dynous Carry Bag For Floorboards D4 Sku 450820

**Sell Price: \$39.00**

Replacement carry bag for floorboards. Protect your floorboards during transport and storage. Color is gray.  
May be a little shop worn. No abrasions. Color is gray.  
43" L x 31" H x 5.25' W



## Mercury Carry Bag

**Sell Price: \$75.00**

Replacement carry bag for boats. Protects your boat during transport and storage.

May be a little shop worn. No abrasions.

43 1/2" L x 26" W x 11 1/4" H





## Defender Oarlock Assembly

**Sell Price: \$19.99**

Defender Oarlock Assembly designed for RIB and other PVC boats. Color is gray.

8 7/8" L x 4 3/4" W



## Zodiac Floor Slats F5

**Sell Price: \$20.00 ea. (9 available)**

Zodiac floor slat for 240/260 Roll-Ups, Wave 275 (2013 and up)

Also for West Marine and Bombard Roll-Ups Topside is gray, underside dark brown. Slight imperfections.

830mm x 83mm x 10mm

Part # Z3935



## Zodiac Floor Slats F6

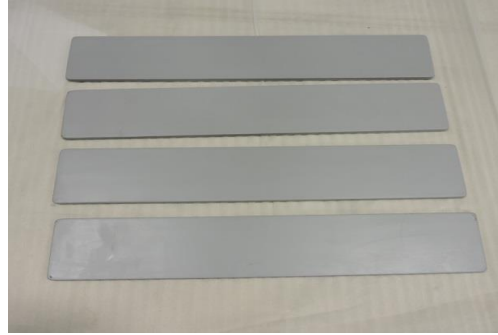
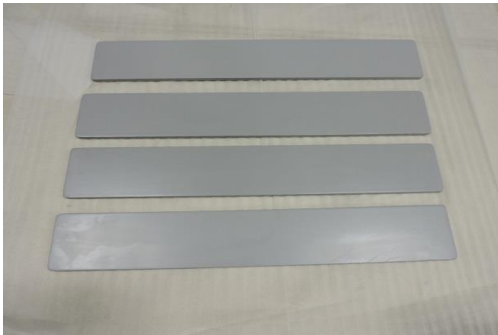
**Sell Price: \$45.00 EACH. (4 available, you get 1 of the 4 pictured)**

Zodiac floor slats for Zoom 230 Roll-Up (2009 and newer)

May be slightly shop worn. Color is gray.

Part # Z69312

29 7/8" x 4 3/4"

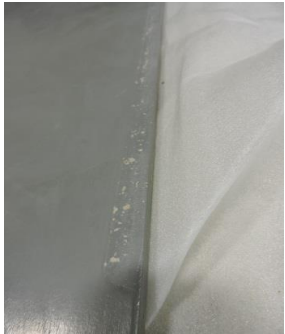


**Achilles Floorboards For Lex-88 F7**

**Sell Price: \$150.00**

Complete set gray painted floorboards with plastic joints for Achilles Lex-88. Some boards require repairs.

Part # LEX88WFG



## Nissan 4 Hp Top Cowl

**Sell Price: \$50.00**

Nissan / Tohatsu top cowl with 4Hp decals. 2005 program year that will fit a 4B, 5B, 6B. Has paint chip and minor scratches.

Part # 3R4Q67560-1





## Bombard / Typhoon Carry Bag

**Sell Price: \$50.00**

Carry Bag For Bombard / Typhoon Inflatable. Color is blue.

Part # Z69368

40 1/4" L x 24" W x 11 1/2" H



## Refurbished Scoprega Bravo BST12HP SuperTurbo Electric Air Pump P1

**Sell Price: \$98.99**

Electric air pump for inflatable boats. As is with no warranty. When fully charged allows approx 15 min of operation.

Cable length is 3 meters. PSI: 11.6 lb. Battery charger sold seperately.

Part # 6130219

7" x 7" x 11"



## Refurbished Scoprega Bravo BTP 12 Digital Electric Air Pump P2

**Sell Price: \$101.99**

Digital air pump designed to inflate and deflate dinghies up to 20' and all kites on the market. As Is. No Warranty. Stops automatically when selected pressure is reached. Maximum continuous run time: 20 minutes.

Includes: carry bag, common valve adapters, 3 meter power cord with alligator clips, and 1.70 meter inflation hose.

Part # 6130039





## Refurbished Scoprega Bravo BP 12 Electric Air Pump P3

**Sell Price: \$51.99**

Electric air pump designed for inflatable boats up to 10' and kites up to 14meter/sq. As is. No Warranty. Stops automatically when selected pressure is reached (inflation only). Maximum continuous run time: 20 minutes. Includes: carry bag, common valve adapters, 3 meter powe cord with alligator clips, and 1.70 meter inflation hose.

Part # 6130037



## Achilles Inflatable Keel

**Sell Price: \$99.00**

Overall Length 213 cm (84"). Center of valve to Tube end 174 cm (68.5")  
Hypalon material. Color is Gray. Passed 24 hour pressure test.

