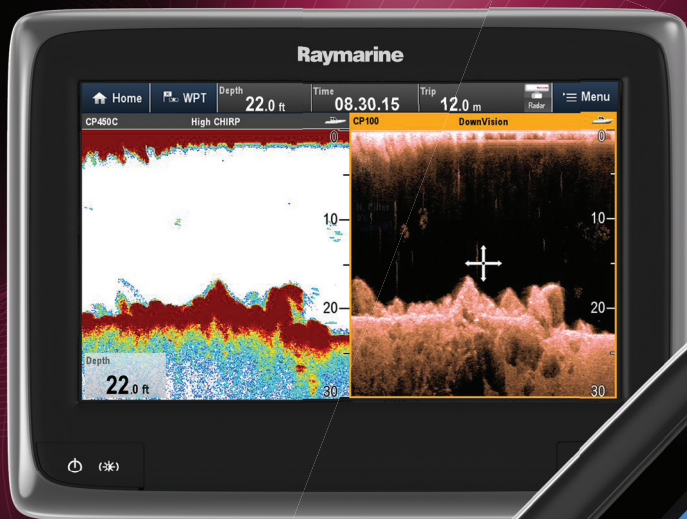


aSeries

Multitouch Multifunction Displays

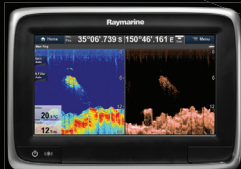
NEW
aSeries a9 and a12



a9
a12



a6



a7



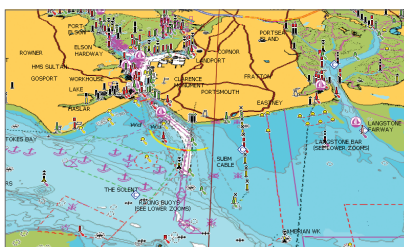
Powerful, go-anywhere navigation; aSeries multifunction displays deliver the speed and simplicity of LightHouse II in a fast and fluid touch-screen experience. With bigger and brighter displays and extensive networking options, the all new a9 and a12 models will put you in control of charts, sonar, radar, and more.

LightHouse II User Interface

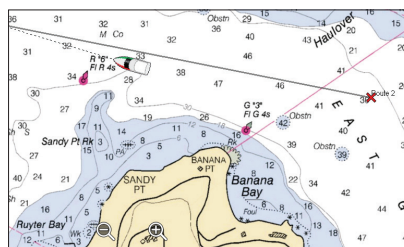
LightHouse II is simple to learn and customise and makes everything easier. Engineered for the future with regular free updates with new features and enhancements.

Fast and Responsive Chartplotting

- Raymarine's most advanced chartplotter engine with pinch-to-zoom
- Internal 10Hz GPS for fast and smooth vessel tracking
- GPS: WAAS/EGNOS/GLONASS support
- Optional external GA150 GPS antenna for below deck applications
- Support for both Raymarine LightHouse and Navionics charts
- Free raster and vector USA charts



Navionics charts



Raymarine USA raster chart



Raymarine USA vector chart

Remote Control

Interact with aSeries responsive touch screen or take advantage of wired and wireless remote control options.



RayRemote App

Turn your smartphone or tablet into a fully functioning aSeries remote control.



RMK-9

This wired remote provides full control of the LightHouse user interface. Control aSeries from a remote location or mount the RMK-9 alongside any aSeries for HybridTouch™ control.

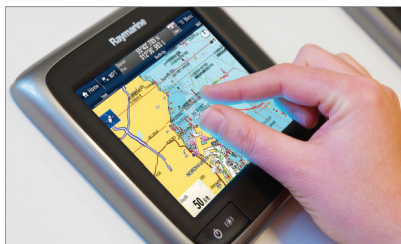
TAKE THE EASY ROUTE

Fluid, tablet like all touch screen user interface experience powered by LightHouse II



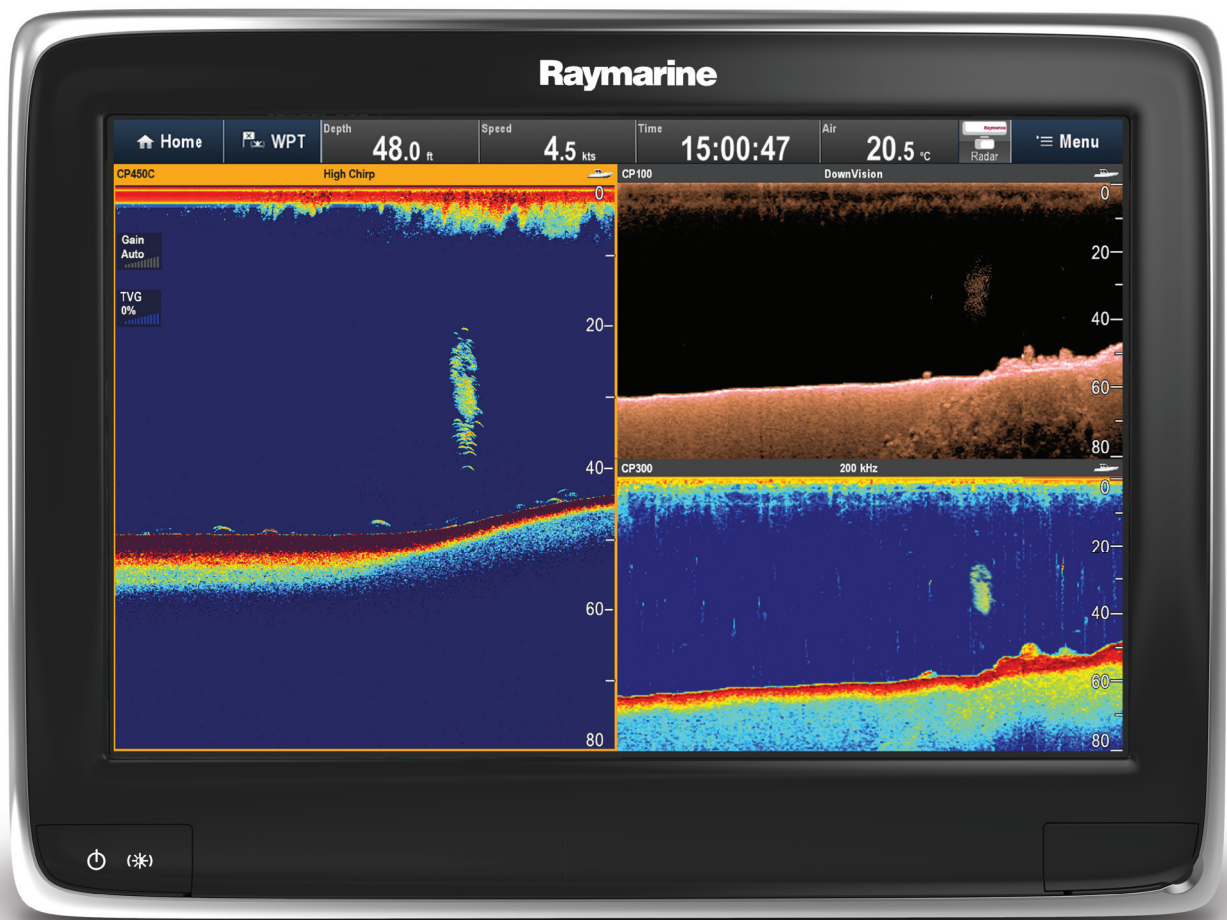
Bluetooth RCU-3

Simple wheel-mounted wireless remote lets you change ranges scales, switch between apps or mark waypoints.



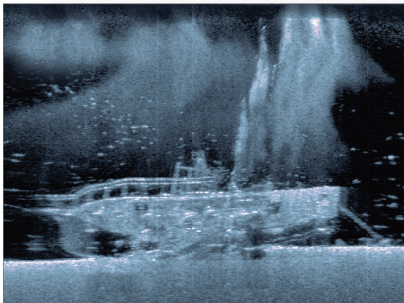
Multitouch

All touch screen MFD with pinch-to-zoom.

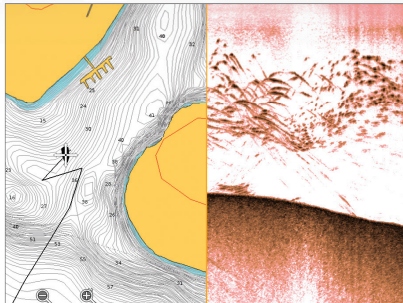


aSeries is your sonar command centre. View and control multiple sonars on the network

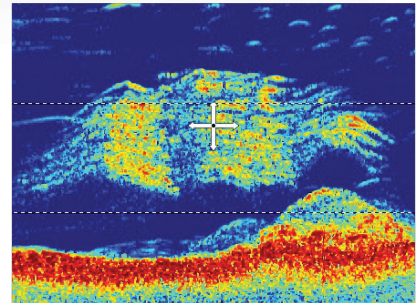
CP450C CP100 V12 CP300 CP120



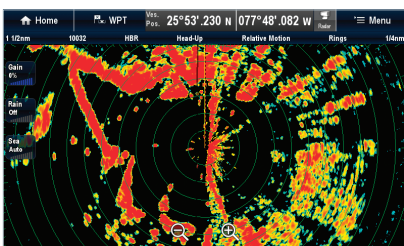
CHIRP DownVision – wreck and fish



CHIRP DownVision chart and fish



Digital sonar – fish



Radar

Compatible with Digital, HD Color and Super HD Color radar antennas.

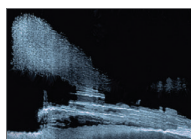


THE SMARTER WAY TO FISH

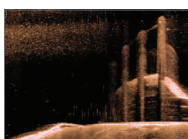
with Digital sonar or CHIRP DownVision™ sonar built-in

Transform aSeries into your sonar command centre. View and control networked CHIRP, Digital, and DownVision sonars simultaneously.

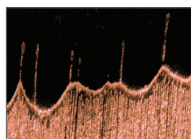
- Experience Visionality™ with CHIRP DownVision built in
- Superior DownVision deep water performance (600ft/183 metres)
- Dual-channel CHIRP – DownVision plus a fish targeting CHIRP channel
- For conventional sonar, choose aSeries with digital sonar built in
- Network aSeries with high performance external Digital, CHIRP and CHIRP DownVision modules
- Navionics Sonar Chart support for recording bathymetric data
- Create customised Navionics bathymetric fishing maps



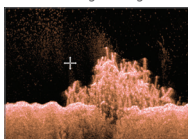
Wreck and fish



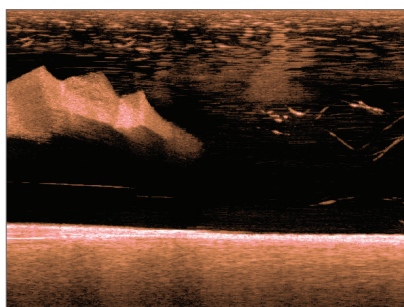
Submerged bridge



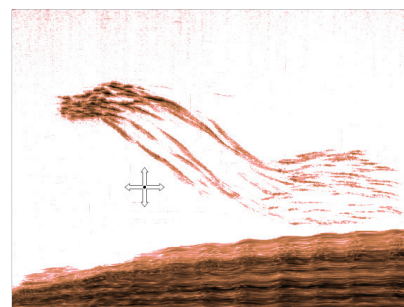
Mussel farm



Bottom structure



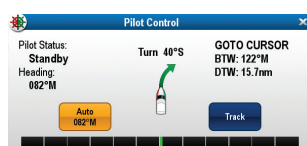
Hairtail chasing bait



School of fish

Evolution Autopilot Control

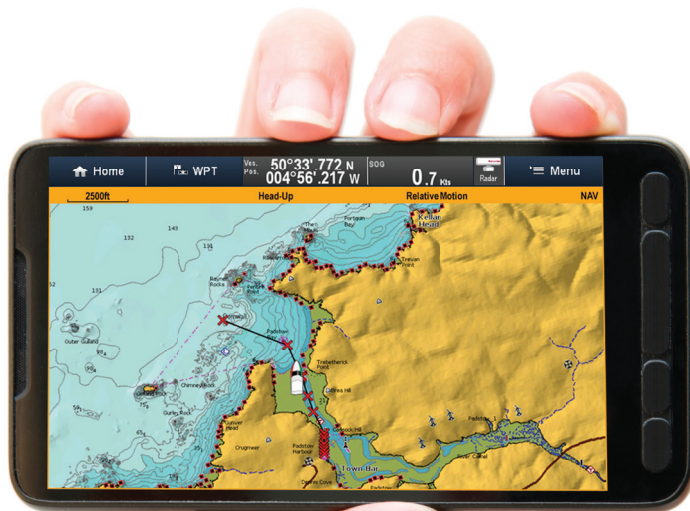
Seamless integration with Raymarine Evolution autopilot systems.



Mobile Integration

Wireless Built-in

- Access aSeries anywhere onboard with Raymarine apps. No extra modules required
- Play and control MP3 audio on your smartphone remotely using Bluetooth
- Sync with Navionics Boating Apps
- Navionics Plotter Sync bridges waypoints and routes between aSeries and your smartphone
- Download Navionics charts and updates right from the Navionics Boating App on your phone



Navionics Mobile



Audio

Control your audio with Bluetooth or FUSION link.



Connectivity

Link to other MFDs, connect cameras, external transducers and modules.

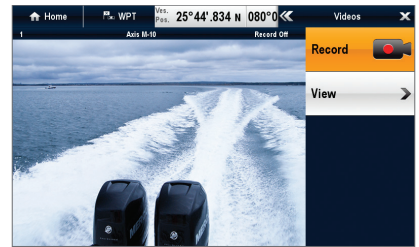


YOUR SIXTH SENSE AT SEA

Thermal night vision and video camera integration



See at night



- Thermal night vision meets touch screen with aSeries and Raymarine thermal cameras
- Superior FLIR thermal camera technology
- Choose fixed-mount or pan/tilt/zoom thermal camera options
- Slew-to-Cue camera integration with AIS and Radar targets

Camera and Video Over IP

- Analogue video input for keeping watch, docking or engine room monitoring (a9 and a12 only)
- Connect multiple IP cameras, record and playback video



microSD card reader

Single card reader on a6 and a7.
Dual microSD card readers on a9/a12 for charts and data.



Flexible mounting

Surface mount or bracket mount using the supplied mounting kit.



Features	a12	a9	a7	a6
Screen size	12.1 inches	9.0 inches	7.0 inches	5.7 inches
Touch screen	Multitouch with pinch-to-zoom			
GPS	Built-in 10Hz Fast Acquisition with GLONASS, WAAS/ EGNOS/MSAS		Built-in 5Hz Fast Acquisition with WAAS/ EGNOS/MSAS	
CHIRP Sonar	Built in on a128 / a98 / a78 and a68 models			
CHIRP DownVision	Built in on a128 / a98 / a78 and a68 models			
Digital Sonar	Built in on a127 / a97 / a77 and a67 models			
Network Sonar Support	Yes			
Radar	Yes. Optional Radome or Open Array Scanners			
Thermal night vision compatibility	Yes		No	
Autopilot control	Full control and integration with Evolution autopilots			
Weather	USA only. SIRIUSXM Weather and satellite radio Support. Optional receiver required.			
Entertainment	Fusion True Marine Stereo remote control. SIRIUSXM Radio control, Bluetooth MP3 Player control.			
AIS compatible	Yes, with chart and radar overlay.			
Engine integration	Yes, NMEA2000 or via ECI-100 Universal Engine Interface			
Vessel environment control	Optional EmpirBus Digital Switching			
Mounting	Flush and bracket mount kits included			
Interfaces	Raynet Ethernet, SeaTalk ^{NG} , NMEA2000 (Adapter included), NMEA0183 In/Out, Analog Video In, Wi-Fi, Bluetooth		Raynet Ethernet, SeaTalk ^{NG} , NMEA2000 (Optional adapter), Wi-Fi, Bluetooth	
Chart Support	Raymarine LightHouse Charts and Navionics			
Video input	Analogue and IP Video		IP video only	
Memory Card Reader	Dual microSD card readers for charts and data		Single microSD card reader for charts and data	
Waypoint Symbols	Over 70 unique waypoint icons			
Waypoint Memory	3000 waypoints. 200 Waypoints per route. Unlimited storage with optional microSD cards			
Data Transfer Options	GPX File Format / Raymarine. FSH Format / Via Wi-Fi and Navionics Boating App			
Multi-Language	Yes			
Power requirements	12 or 24Volts Systems		12Volt System	
Power Consumption at Full Brightness	a125 (26W) a127 (29.6W) a128 (28W)	a95 (14.5W) a97 (18.1W) a98 (16.5W)	a75 (9.1W) a77 (12.7W) a78 (11.1W)	a65 (9W) a67 (12 W) a68 (10.6 W)
Waterproof	IPX6 and IPX7			
Warranty	2 years standard plus 1 year with online product registration for a total of 3 years of protection			



	A		B		C	
a6	71mm	2.79"	164mm	6.45"	144mm	5.66"
a7	73.6mm	2.89"	205mm	8.07"	147mm	5.78"
a9	82.6mm	3.25"	250mm	9.84"	189.5mm	7.46"
a12	84.1mm	3.31"	318mm	12.5"	238.3mm	9.38"

Content Note

The technical and graphical information contained in this brochure, to the best of our knowledge, was correct as it went to press. However, the Raymarine policy of continuous improvement and updating may change product specifications without prior notice. Therefore, unavoidable differences between the product and this brochure may occur from time to time, for which liability cannot be accepted by Raymarine.

Some images are for illustration purposes only.

Note: Equipment described herein may require US Government authorisation for export purposes. Diversion contrary to US law is prohibited.