

BBWX4

SiriusXM Marine Receiver FAQ



BBWX4 SiriusXM Marine Receiver FAQ

Q. [What models of Furuno NavNet MFDs are compatible with the BBWX4?](#)

The BBWX4 is compatible with TZtouch2 version 6.21 software and above, TZtouch version 6.01 (due Spring 2019) software and above. The BBWX4 is not compatible with NavNet 3D, NavNet VX2 or NavNet 1.

Q. [Can I control the BBWX4 SiriusXM Satellite Radio audio channels using NavNet TZtouch and TZtouch2?](#)

TZtouch2 is compatible with BBWX4 SiriusXM audio.

TZtouch does not support audio control of the BBWX4, only weather information.

Q. [I'm replacing a BBWX2/3 with the BBWX4. Can I reuse any of the cables?](#)

Only the antenna and the antenna cable can be reused.

Q. [What is the difference between BBWX4 and BBWX3?](#)

The capabilities of both units are currently the same. However, the BBWX4 can support new data features as they become available. Also, the BBWX4 is a better value, in addition to being lower in price, it includes the antenna.

Q. [Does the BBWX4 buffer/store received messages?](#)

No. All weather data is stored by the MFD, not the receiver. The BBWX4 does not buffer or store any weather information. When the BBWX4 is turned on, the unit will send updated weather information to the MFD as it is received.

Q. [How often do the weather data elements update?](#)

For high priority weather elements like precipitation and storm information updates occur every 4 to 6 minutes. Lower priority weather elements, update at different intervals from 15 to 60 minutes.

Q. What comes in the box?

The BBWX4 is supplied with a Shakespeare SRA-50 SiriusXM antenna, 25ft of antenna cable, power cable, network and audio cables, owner's manual.



Q. Are there any accessories for the BBWX4?

Yes. A longer 35' antenna cable is available. Stock cable length is 25ft. Longer cable part # is [WX3-SRC-035](#). This cable is also slightly thicker compared to the standard-length cable.

Q. Where should the antenna be installed?

For optimal performance, the antenna should be located where it has an unobstructed view of the sky, outside the beam of any transmitting radar or other strong RF source.

Q. Where can I find the BBWX4's Radio ID# so I can activate it?

You can find the BBWX4's Radio ID# on the packaging and on the back of BBWX4, along with the serial number. It is recommended that you copy or take a picture of this information before you mount the BBWX4. You can also find the Radio ID on one of the MFD setting screens, when the BBWX4 and MFD are properly connected.

Q. What weather subscriptions are currently available for the BBWX4?

[SiriusXM marine receiver subscriptions](#). The BBWX4 is compatible with Marine Coastal and Marine Offshore weather packages. In addition to these packages, TZTouch2 can also control the audio section of the BBWX4 (TZtouch is only compatible with marine weather)

Q. Are there any specials for the BBWX4?

Yes, there is a \$100 rebate available from SiriusXM for customers who purchase and activate a BBWX4 during the qualifying period. Click here for [BBWX4 Rebate Offer](#)

Q. Is there a free trial of SiriusXM Marine services?

Yes, many Furuno dealers can provide a free trial. You can also contact Marine.Support@siriusxm.com for further information about trials.

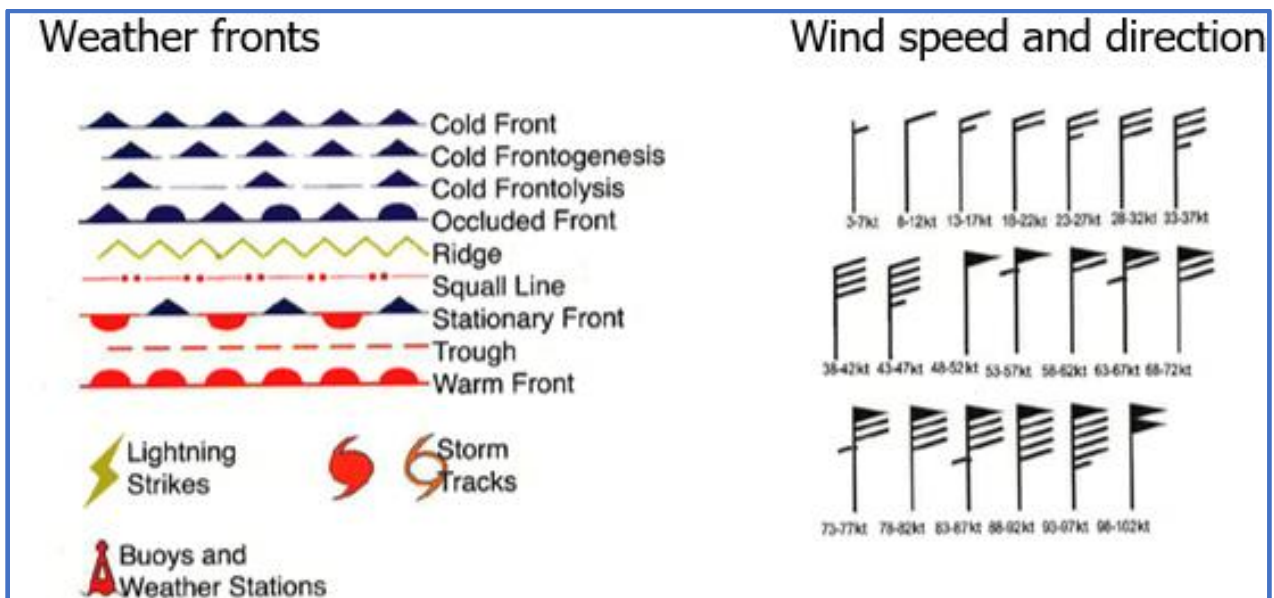
Q. I'm interested in SiriusXM's Marine weather, can you provide some additional reference?

Please visit SiriusXM's Marine YouTube channel, you can also contact: Marine.Support@siriusxm.com with any questions you may have.

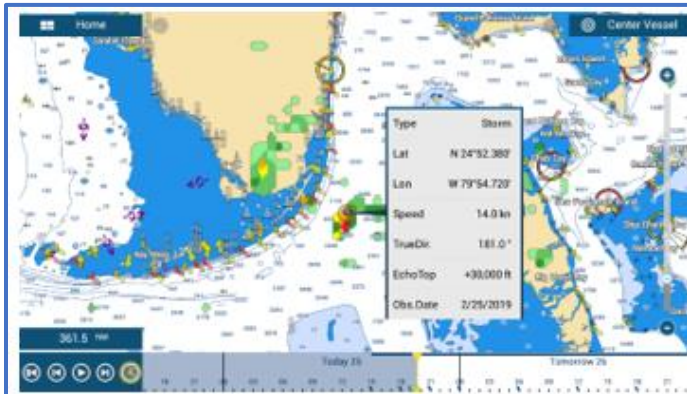
Q. If I have any question regarding on BBWX4's SiriusXM Marine and music package, who from SiriusXM shall I contact?

Please contact Marine.support@siriusxm.com

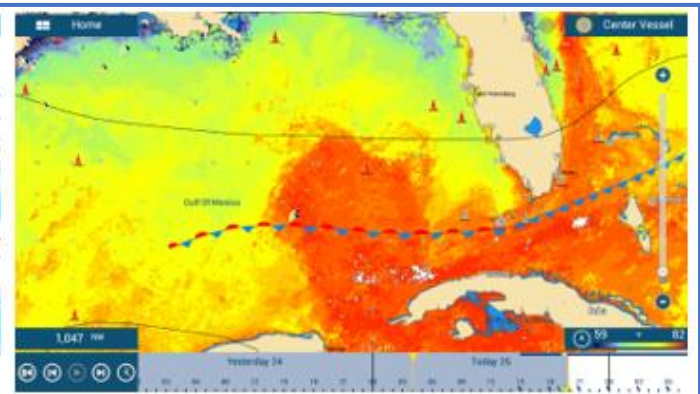
Q. What type of information can I expect to see once the BBWX4 has been installed and activated?



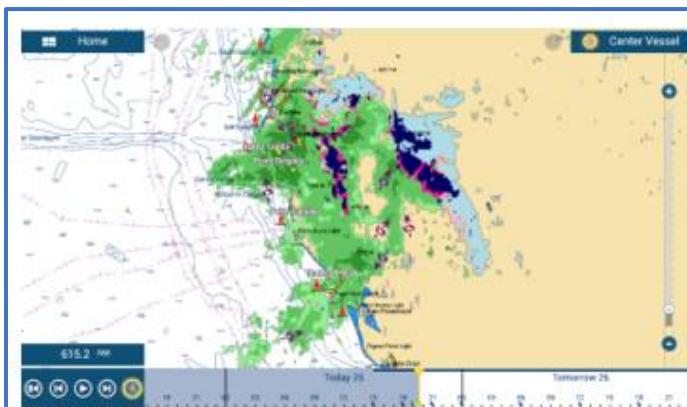
Images of live data



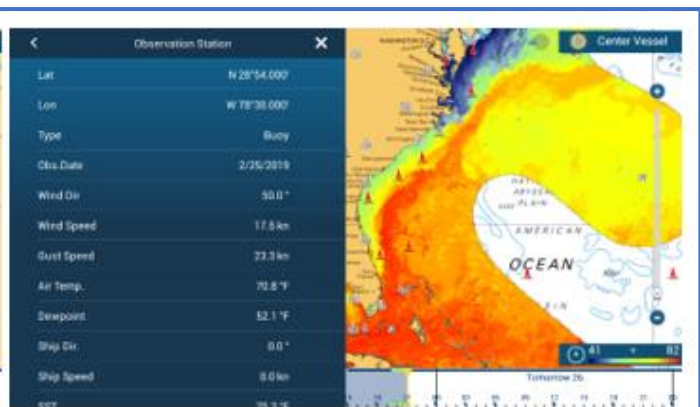
Live NOWRad® radar overlay



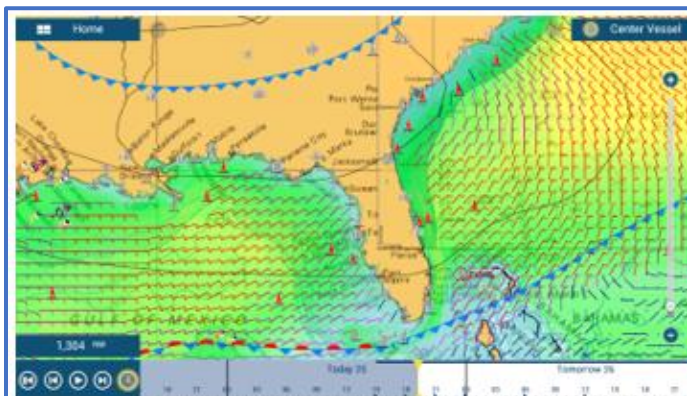
Color satellite sea surface temps (SST)



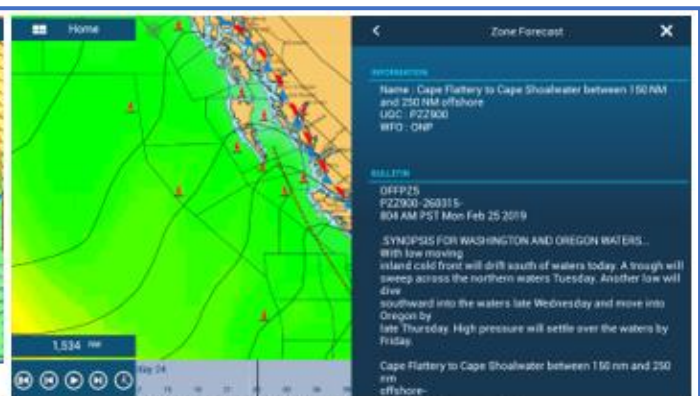
Color separates different weather



Detailed Buoy reports



Wind Information



Zone Forecast

For additional details on Buoys, Cities, Marine Zone Forecasts, Storm Casts, Marine Warnings, Tropical Information, SST and other information, simply tap on the screen or symbol and a data box will show detailed information.

[Click here for SiriusXM Marine receiver general FAQ](#)