

Vernalift Side in/Top Out

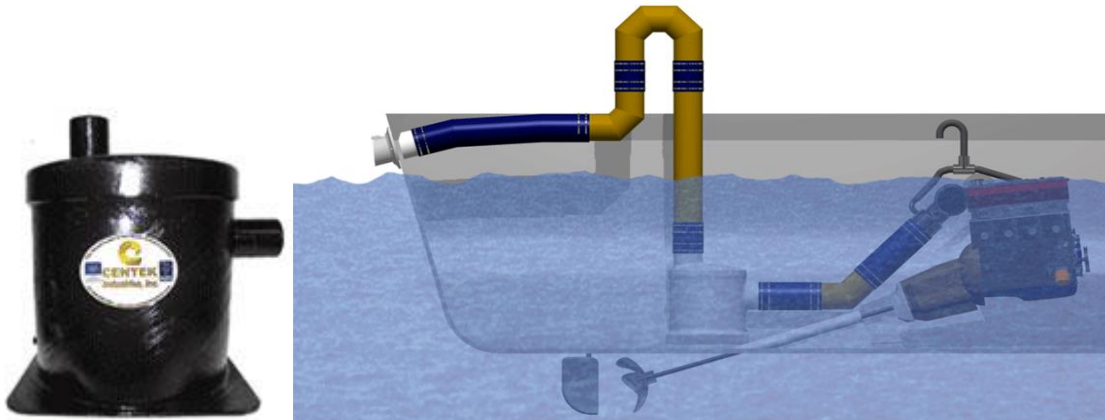
The Vernalift was designed originally for small auxillary engines installed near or below the water line. Now the Vernalift family has expanded to include new and larger engines.

Application: Inboards, Sailboats & Generators

Fuel type: Gas/Diesel

Waterline: Above or Below

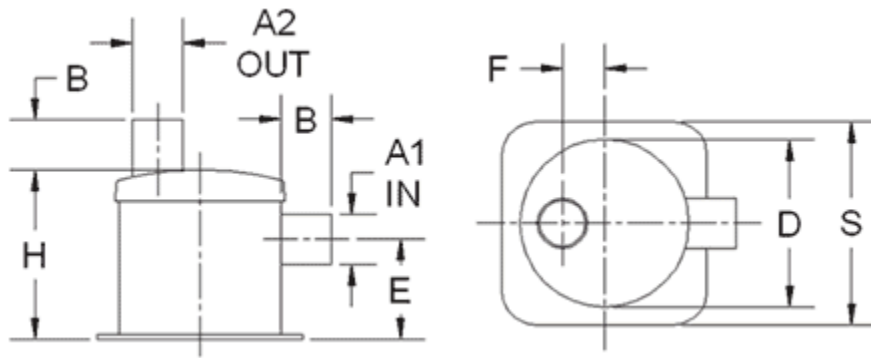
Sound rating: Better



VERNALIFT™ SIDE IN - TOP OUT

Part #	A1 INLET INCHES	A2 OUTLET MMINCHES	B I/O LENGTH MMINCHES	D DIAMETER MMINCHES	E INLET HGT MMINCHES	F I/O OFFSET MMINCHES	H HEIGHT MMINCHES	S SQ. BASE MM								
1500275	1.50	38	1.50	38	2.00	51	6.38	162	5.81	148	1.50	38	9.00	229	7.00	178
1500071	1.50	38	1.50	38	2.50	64	8.36	212	4.68	119	2.00	51	8.00	203	9.00	229
1500225	1.50	38	1.50	38	2.50	64	12.34	313	8.25	210	2.75	70	12.00	305	12.00	305
1500142	1.50	38	2.00	51	2.50	64	8.36	212	4.68	119	2.00	51	8.00	203	9.00	229
1500222	1.63	41	1.50	38	3.00	76	8.36	212	4.68	119	2.00	51	8.00	203	9.00	229
1500262	1.63	41	1.63	41	2.00	51	6.38	162	5.81	148	1.50	38	9.00	229	7.00	178
1500020	1.63	41	1.63	41	2.50	64	8.36	212	4.68	119	2.00	51	8.00	203	9.00	229
1500123	1.63	41	1.63	41	2.50	64	10.04	255	6.50	165	2.50	64	10.16	258	10.50	267
1500140	1.63	41	1.75	44	2.50	64	8.36	212	4.68	119	2.00	51	8.00	203	9.00	229
1500239	1.63	41	1.63	41	2.50	64	12.34	313	8.06	205	2.75	70	12.00	305	12.00	305
1500073	1.63	41	2.00	51	2.50	64	8.36	212	4.68	119	2.00	51	8.00	203	9.00	229
1500125	1.75	44	1.50	38	2.50	64	8.36	212	4.68	119	2.00	51	8.00	203	9.00	229
1500022	1.75	44	1.75	44	2.50	64	8.36	212	4.68	119	2.00	51	8.00	203	9.00	229
1500148	1.75	44	2.00	51	2.50	64	10.04	255	6.50	165	2.50	64	10.16	258	10.50	267
1500146	1.88	48	1.63	41	2.50	64	10.04	255	6.50	165	2.50	64	10.16	258	10.50	267
1500263	1.88	48	1.88	48	2.00	51	6.38	162	5.81	148	1.50	38	9.00	229	7.00	178
1500024	1.88	48	1.88	48	2.50	64	8.36	212	4.68	119	2.00	51	8.00	203	9.00	229
1500075	1.88	48	2.00	51	2.50	64	8.36	212	4.68	119	2.00	51	8.00	203	9.00	229
1500210	2.00	51	1.50	38	2.50	64	8.36	212	4.68	119	2.00	51	8.00	203	9.00	229
1500077	2.00	51	1.63	41	2.50	64	8.36	212	4.68	119	2.00	51	8.00	203	9.00	229
1500121	2.00	51	1.88	48	2.50	64	8.36	212	4.68	119	2.00	51	8.00	203	9.00	229
1500074	1.88	48	1.88	48	2.50	64	10.04	255	6.50	165	2.50	64	10.16	258	10.50	267
1500078	2.00	51	1.88	48	2.50	64	10.40	264	6.50	165	2.50	64	10.16	258	10.50	267

1500054 2.00	51	2.00	51	2.00	51	6.38	162	4.13	105	1.50	38	9.00	229	7.00	178
1500264 2.00	51	2.00	51	2.00	51	6.38	162	5.81	148	1.50	38	9.00	229	7.00	178
1500026 2.00	51	2.00	51	2.50	64	8.36	212	4.68	119	2.00	51	8.00	203	9.00	229
1500027 2.00	51	2.00	51	2.50	64	10.04	255	6.50	165	2.00	51	10.16	258	10.50	267
1500120 2.00	51	2.00	51	2.00	51	12.34	313	8.50	216	2.50	64	12.00	305	12.00	305
1500147 2.00	51	2.25	57	3.00	76	12.34	313	8.50	216	2.50	64	12.00	305	12.00	305
1500137 2.00	51	2.50	64	2.50	64	8.36	212	4.68	119	2.00	51	8.00	203	9.00	229
1500055 2.00	51	2.50	64	2.50	64	8.36	212	4.68	119	2.00	51	8.00	203	9.00	229
1500079 2.00	51	2.50	64	2.50	64	10.04	255	6.50	165	2.50	64	10.16	258	10.50	267
1500132 2.00	51	2.50	64	3.00	76	12.34	313	8.50	216	2.50	64	12.00	305	12.00	305
1500028 2.25	57	2.25	57	2.50	64	8.36	212	4.68	119	2.00	51	8.00	203	9.00	229
1500029 2.25	57	2.25	57	2.50	64	10.04	255	6.50	165	2.50	64	10.16	258	10.50	267
1500080 2.25	57	2.38	60	2.50	64	12.34	313	8.34	212	2.50	64	12.00	305	12.00	305
1500030 2.38	60	2.38	60	2.50	64	8.36	212	4.68	119	2.00	51	8.00	203	9.00	229
1500031 2.38	60	2.38	60	2.50	64	10.04	255	6.50	165	2.50	64	10.16	258	10.50	267
1500081 2.38	60	2.38	60	2.50	64	12.34	313	7.25	184	2.50	64	12.00	305	12.00	305
1500082 2.38	60	2.50	64	2.50	64	10.04	255	6.30	160	2.50	64	10.16	258	10.50	267
1500083 2.50	64	2.38	60	2.50	64	12.34	313	8.25	210	2.50	64	12.00	305	12.00	305
1500032 2.50	64	2.50	64	2.50	64	10.04	255	6.50	165	2.50	64	10.16	258	10.50	267
1500128 2.50	64	3.00	76	3.00	76	12.34	313	7.25	184	2.75	70	12.00	305	12.00	305
1500033 2.88	73	2.88	73	3.00	76	10.04	255	6.19	157	2.50	64	10.16	258	10.50	267
1500139 2.88	73	3.00	76	3.00	76	10.04	255	6.19	157	2.50	64	10.16	258	10.50	267
1500084 3.00	76	2.88	73	3.00	76	12.34	313	8.00	203	2.75	70	12.00	305	12.00	305
1500232 3.00	76	3.00	76	3.00	76	10.06	256	4.75	121	2.25	57	10.06	256	10.50	267
1500034 3.00	76	3.00	76	3.00	76	10.04	255	6.50	165	2.50	64	10.16	258	10.50	267
1500235 3.00	76	3.00	76	3.00	76	12.31	313	4.50	114	2.75	70	12.00	305	12.00	305
1500085 3.00	76	3.00	76	3.00	76	12.34	313	8.00	203	2.75	70	12.00	305	12.00	305
1500152 3.00	76	3.50	89	3.50	89	10.04	255	6.50	165	2.50	64	10.16	258	10.50	267
1500086 3.50	89	3.00	76	3.50	89	12.34	313	7.75	197	2.75	70	12.00	305	12.00	305
1500087 3.50	89	3.50	89	3.50	89	12.34	313	7.75	197	2.75	70	12.00	305	12.00	305
1500151 3.50	89	5.00	127	5.00	127	12.34	313	7.75	197	2.75	70	12.00	305	12.00	305
1500130 4.00	102	3.50	89	4.00	102	12.34	313	7.25	184	2.75	70	12.00	305	12.00	305
1500088 4.00	102	4.00	102	4.00	102	12.34	313	7.50	191	2.75	70	12.00	305	12.00	305
1500149 4.00	102	5.00	127	5.00	127	16.17	411	8.75	222	4.00	102	16.00	406	17.00	432
1500089 4.50	114	4.50	114	4.50	114	12.34	313	7.25	184	2.75	70	12.00	305	12.00	305
1500091 5.00	127	5.00	127	5.00	127	12.34	313	6.00	152	2.75	70	12.00	305	12.00	305
1500090 5.00	127	5.00	127	5.00	127	16.17	411	8.75	222	4.00	102	16.00	406	17.00	432
1500092 6.00	152	6.00	152	5.00	127	16.17	411	8.75	222	4.00	102	16.00	406	17.00	432
1500093 6.00	152	8.00	203	6.00	152	16.11	409	8.75	222	3.00	76	16.00	406	17.00	432
1500094 8.00	203	8.00	203	6.00	152	18.50	470	10.50	267	3.00	76	18.00	457	19.00	483
1500205 8.00	203	10.00	254	8.00	203	24.60	625	12.00	305	6.00	152	24.00	610	26.00	660
1500159 10.00	254	10.00	254	8.00	203	24.60	625	12.00	305	6.00	152	24.00	610	26.00	660



The following table is for general recommendations only:

IN & OUT SIZE / MAXIMUM H.P.		
Dia. A	Gasoline	Diesel
1.50" or 1.63"	30	10
2.00"	60	25
2.50"	110	40
3.00"	160	60
3.50"	220	85
4.00"	280	125
4.50"	320	170
5.00"	370	210
6.00"	440	280
8.00"	--	420
10.00"	--	680
12.00"	--	900
14.00"	--	1150

NOTE: For V-Block engines where twin exhaust lines are desired, divide the H.P. by two and then match to the appropriate size