

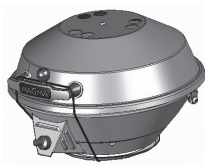
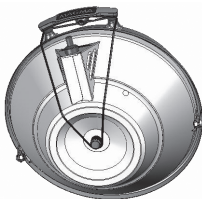
Care and Use: A10-991 Magma Padded Grill and Accessories Carrying / Storage Case

SAFETY:

- Always store in a well ventilated area.
- Never store carrying case containing propane canisters in unventilated areas or below deck on a boat.
- Never store hot grill in case.
- Use caution when storing items with sharp points and edges (knives, forks, and other utensils).
- Disconnect control valve regulator from fuel canister and grill prior to storage.

ASSEMBLY / INSTALLATION INSTRUCTIONS:

1. Secure grill lid with supplied bungee cord



Fish & Veggie Tray

Griddle

Fuel Canisters

Grill

Mount

2. Install (2) fuel canister storage compartments



3. Mount pocket



4. Control Valve & Venturi Tube Pocket



5. Griddle Pocket



6. Fish & Veggie Tray Pocket



7. Store up to 4 fuel canisters



8. Store grill with handle up



USE:

- Insure that grill's internal components (cooking grill and radiant plate and dome assembly) are properly secured prior to storage or transportation
- Always remove mount, venturi tube, & control valve/regulator or low pressure control valve from grill prior to storing or transporting.

CLEANING:

- Hand wash with cold water a mild dishwashing detergent and thoroughly air dry.
- Never use any abrasive cleansers, cleaners, and/or cleaning products on this product.

WARRANTY:

- Magma Products, Inc. warrants this product to be free of defects in materials and/or workmanship for a period of 1 year from the date of original purchase (proof of purchase required).
- Magma Products, Inc. will not be liable for products damaged due to outside storage; discoloration from sun exposure, any weather related damages, general neglect, and/or misuse by the user.
- Magma Products, Inc. must approve all product warranty claims.
- Magma Products, Inc. reserves the exclusive right to repair and/or replace any product or component defective in material or workmanship during the warranty period.
- Warranty claims; Do Not contact or return this product to retailer. Prior to returning product contact Magma Products, Inc. directly for return authorization and instructions.
- Returning warranty claims; user is responsible for all applied shipping charges.

MAGMA[®]

Magma Products, Inc. • 3940 Pixie Ave.
Lakewood, CA 90712 • USA • Tel: (562) 627-0500
www.MagmaProducts.com • mail@MagmaProducts.com