



MARCH PUMPS

1819 PICKWICK AVE., GLENVIEW, IL 60026-1306, U.S.A
 PHONE: (847) 729-5300 - FAX: (847) 729-7062
 WWW.MARCHPUMP.COM

AC-2CP-MD, AC-2AP-MD
 BC-2CP-MD, BC-2AP-MD
 2CP-MD, LC-2CP-MD

MODEL ABBREVIATIONS:

AC = Air Cooled Motor, BC = Blast Cooled Motor, LC = Liquid Cooled
 CP = Threaded Inlet/Outlet, AP = Smooth Inlet/Outlet, MD = Magnetic Drive
 BC models have an encapsulated impeller magnet.

NOTES: All specifications & data are based on pumping water & are intended as a guideline only. Specifications may vary with different motors.

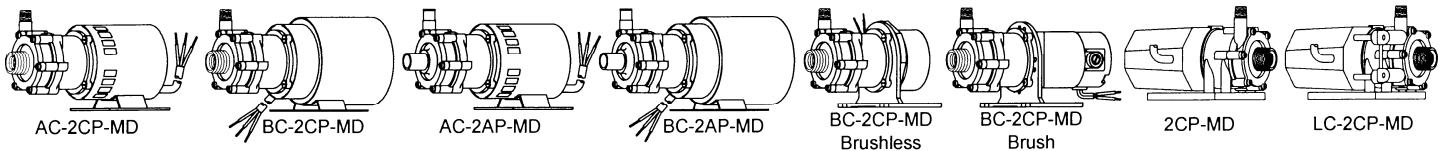
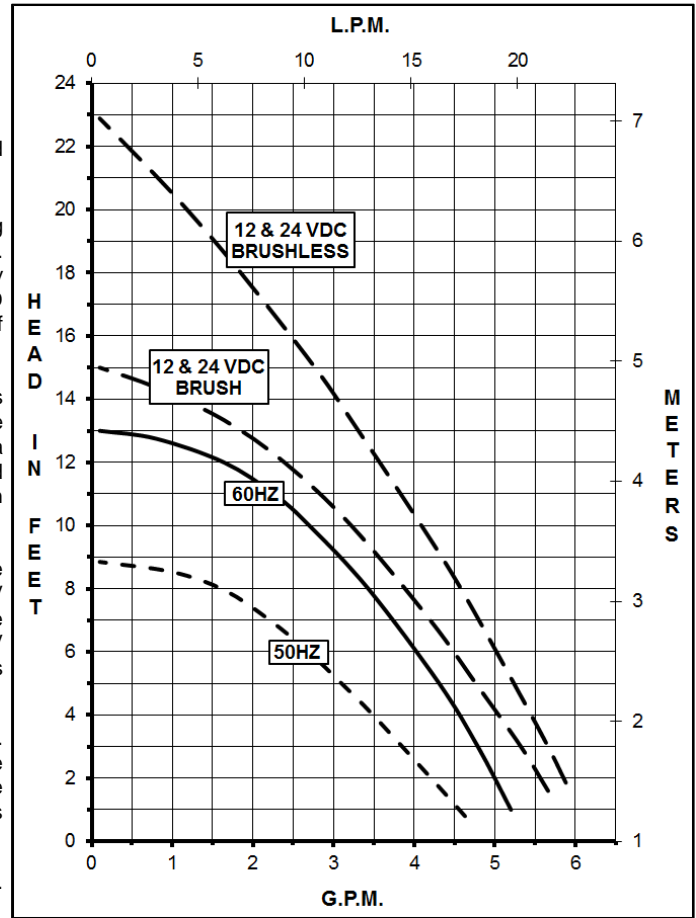
DESCRIPTION: Series 2 are centrifugal magnetic drive pumps, eliminating the need for a shaft seal. These pumps can be serviced with a screwdriver. The "LC" model is hermetically encapsulated allowing the pump to run fully submerged or in open air for complete moisture protection. Model 2CP-MD must be run submerged only. See the repair parts list for a breakdown of replacement parts.

OPERATION: These pumps are not self-priming, lack a suction lift, and thus require a **flooded suction**. These pumps **cannot be run dry** because the impeller requires the liquid being pumped for lubrication. For liquids with a specific gravity greater than water, have a higher viscosity, or for elevated temperatures, a trimmed impeller may be necessary. For application assistance, contact March Pump.

ELECTRICAL: The AC-2CP-MD & AC-2AP-MD open air cooled motors are available in different electrical configurations such as, 115V 50/60Hz, or 230V 50/60Hz, 1 phase. The BC-2CP-MD & BC-2AP-MD blast cooled motors are available in different electrical configurations such as, 115V 50/60Hz, or 230V 50/60Hz, 1 phase. The 115V and 230V motors are U.L. listed and rated as continuous duty.

The BC-2CP-MD (D.C.) motors are brush style or brushless 12 or 24 VDC. Brushless motors must be operated within a restricted voltage range due to the electronics in the motor. The red lead is positive & blue lead is negative. The range for 12 V.D.C. motors is 10V to 14V and the range for 24 V.D.C. motors is 20V to 28V.

The 2CP-MD and LC-2CP-MD pumps are U.L. Recognized under File No. E80954. U.L. Recognition On Pumps Is For Water Only.



A.C. SPECIFICATIONS			AC-2CP-MD	AC-2AP-MD	BC-2CP-MD	BC-2AP-MD	2CP-MD	LC-2CP-MD	Brush BC-2CP-MD	Brushless BC-2CP-MD
Max Flow	50Hz	lpm	18.5		18.5		18.5		22.7	
	60Hz	gpm	5		5		5		6	
Max Head	50Hz	m	2.7		2.7		2.7		4.6	7
	60Hz	ft (psi)	13 (5.7)		13 (5.7)		13 (5.7)		15 (6.5)	23 (9.9)
Inlet			3/8" FPT & 3/4" MPT	3/4" OD	3/8" FPT & 3/4" MPT	3/4" OD	3/8" FPT & 3/4" MPT		3/8" FPT & 3/4" MPT	
Outlet			1/4" MPT	1/2" OD	1/4" MPT	1/2" OD	1/4" MPT		1/4" MPT	
Max Internal Pressure	psi		50		50		50	25	50	3.4
	bar		3.4		3.4		3.4	1.7	3.4	
Max Liquid Temperature	°F		190		190		130		190	
	°C		87		87		54		87	
Packed Weight	kg/lbs		2/4.5		3/6.5		2/3.5		1.8/4	0.9/2
115V	Motor Type		Air Cooled 1 Phase		Blast Cooled 1 Phase		SUB 1 Phase	TE/SUB 1 Phase	DC 12V	
	50Hz	Watts - Amps	84 - 1.2		75 - 1.2		58 - 1.1		43 - 3.5	38 - 3.1
		Kw - Rpm	0.018 - 2850		0.018 - 2850		0.021 - 2850		0.029 - 3650	0.029 - 3650
	60Hz	Watts - Amps	77 - 1.2		73 - 1.2		54 - 0.92			
		Hp - Rpm	1/40 - 3450		1/40 - 3450		1/35 - 3450		1/25	1/25
Electrical Connection		3 ft (0.9 m) Cord		3 ft (0.9 m) Cord		6 ft Cord w/plug	6 ft (1.8 m) Cord	9" Leads	12" Leads	
230V	Motor Type		Air Cooled 1 Phase		Blast Cooled 1 Phase		SUB 1 Phase	TE/SUB 1 Phase	DC 24V	
	50Hz	Watts - Amps	82 - 0.6		66 - 0.5		59 - 0.72		43 - 1.8	38 - 1.6
		Kw - Rpm	0.018 - 2850		0.018 - 2850		0.021 - 2850		0.029 - 3650	0.029 - 3650
	60Hz	Watts - Amps	75 - 0.6		66 - 0.5		57 - 0.53			
		Hp - Rpm	1/40 - 3450		1/40 - 3450		1/35 - 3450		1/25	1/25
Electrical Connection		3 ft (0.9 m) Cord		3 ft (0.9 m) Cord		6 ft (1.8 m) Cord		9" Leads	12" Leads	
Overall Pump Dimensions in Inches / cm	Height		4.5 / 11.4		4.56 / 11.5		4.13 / 10.4		4.44 / 11.2	
	Width		3.5 / 8.8		3.91 / 9.9		4.87 / 12.3		4.50 / 11.4	
	Length		7.39 / 18.7	7.77 / 19.7	8.36 / 21.2	8.73 / 22.1	6.11 / 15.5		7.61 / 19.3	5.46 / 13.8

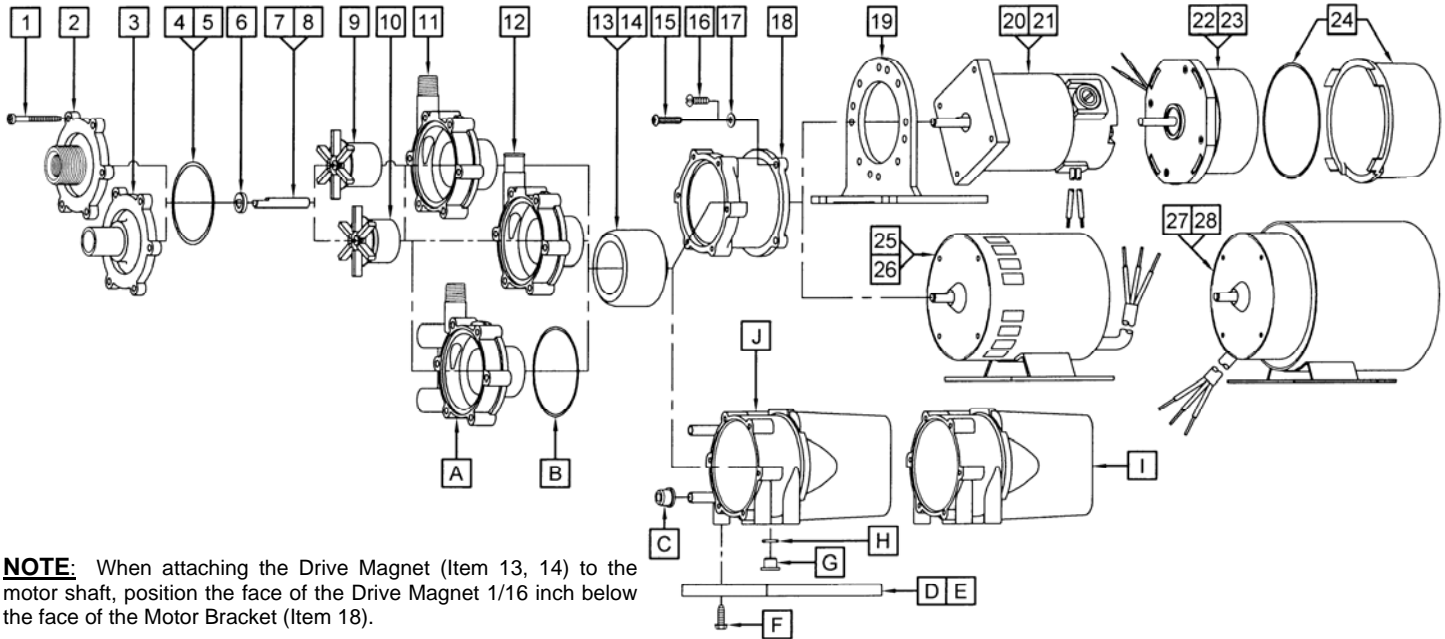
MATERIALS IN CONTACT WITH SOLUTION:

AC-2CP-MD & AC-2AP-MD: Polypropylene, Ceramic, Viton, Ceramic Magnet

BC-2CP-MD & BC-2AP-MD: Polypropylene, Ceramic, Viton

2CP-MD & LC-2CP-MD: Polypropylene, Viton Stainless Steel, Ceramic, Ceramic Magnet. When submerged also Epoxy, Buna N, and cord.

LIMITED WARRANTY: March pumps are guaranteed only against defects in workmanship or materials for a period of one year from date of manufacture pumping water. For the complete warranty and to register online go to www.marchpump.com/warranty-registration



NOTE: When attaching the Drive Magnet (Item 13, 14) to the motor shaft, position the face of the Drive Magnet 1/16 inch below the face of the Motor Bracket (Item 18).

REPAIR PARTS LIST

#	DESCRIPTION	MATERIAL	SIZE (Inches)	QTY.	PART #	AC-2CP-MD	AC-2AP-MD	BC-2CP-MD			BC-2AP-MD	2CP-MD	LC-2CP-MD
								DC					
								Brush	Brushless				
1	Self-Tapping Screw	Stainless	#7-19 x 1-7/16 Lg	6	0115-0062-1000	S	S	S	S	S	S	S	S
2	Cover	Polypropylene	3/8 FPT x 3/4 MPT	1	0125-0056-1000	S	O	S	S	S	O	S	S
3	Cover	Polypropylene	3/4 OD Smooth	1	0125-0096-1000	O	S	O	O	O	S		
4	"O" Ring	Viton	3/32 CS x 2-3/16 OD	1	0125-0065-1000	S	S	S	S	S	S	S	S
5	"O" Ring	Buna N	3/32 CS x 2-3/16 OD	1	0125-0066-1000	O	O	O	O	O	O		
6	Thrust Washer	Ceramic		1	0120-0028-1000	S	S	S	S	S	S	S	S
7	Shaft	Ceramic		1	0125-0061-1000	S	S	S	S	S	S		
8	Shaft	Stainless		1	0125-0125-1000	O	O	O	O	O	O	S	S
9	Impeller Encapsulated	Polypropylene		1	0125-0087-0200	O	O	S	S	S	S		
10	Impeller	Polypropylene/Ceramic Magnet		1	0125-0055-0100	S	S	O			O	S	S
11	Rear Housing	Polypropylene	1/4 MPT	1	0125-0058-1000	S	O	S	S	S	O	S	
12	Rear Housing	Polypropylene	1/2 OD Smooth	1	1008-0001-1000	O	S	O	O	O	S		
13	Drive Magnet		0.250 Bore	1	0125-0083-0100	S	S	S	S		S		
14	Drive Magnet		6mm Bore	1	0125-0083-0200				S				
15	Screw	Stainless	#8-32 x 3/4 Lg	4	0210-0036-1000				S	S			
16	Screw	Stainless	#8-32 x 1/2 Lg	4	0150-0015-1000		S	S			S		
17	Washer	Stainless	#8	4	0858-0004-1000	S	S	S	S	S	S		
18	Motor Bracket	Plastic		1	0125-0069-1000	S	S	S	S	S	S		
19	Base	Plastic		1	0125-0106-1000			S	S				
A	Rear Housing & Plug	Polypropylene	1/4 MPT	1	0125-0057-0100								S
B	Bracket "O" Ring	Viton	1/16 CS x 2-3/8 OD	1	0125-0121-1000							S	S
C	Cooling Tube Seal	Buna N		2	0125-0007-1000								S
D	Mounting Base	Polypropylene		1	0125-0060-1000							S	S
E	Marine Base*	Polypropylene & Grommets		1	0125-0113-0100								O
F	Base Screw	Stainless		4	0125-0130-1000							S	S
G	Plug (Motor Bracket)			1	0125-0110-1000							S	S
H	"O" Ring	Viton	1/16 CS x 7/16 OD	1	0210-0008-1000							S	S
I	Epoxy Motor, Bracket, Cord Assembly			n/a	Not Available							S	
J	L.C. Epoxy Motor, Bracket, Cord Assembly			n/a	Not Available								S
20	Motor (DC Brush) 12V			1	0809-0101-1000			S					
21	Motor (DC Brush) 24V			1	0809-0103-1000			S					
22	Motor (DC Brushless) 12V			1	0125-0127-1000				S				
23	Motor (DC Brushless) 24V			1	0125-0128-1000				S				
24	Cover & "O" Ring	N/A	1/16 CS x 3 OD	1	0125-0133-1000				O				
25	AC Motor, 115V, 50/60Hz			1	0125-0052-1000	S	S	O			O		
26	AC Motor, 230V, 50/60Hz			1	0125-0063-1000	S	S	O			O		
27	BC Motor, 115V, 50/60Hz			1	0125-0088-1000	O	O	S			S		
28	BC Motor, 230V, 50/60Hz			1	0125-0089-1000	O	O	S			S		

NOTE: Contact Factory for other materials and/or parts not listed. *Not Shown Legend: S = Standard, O = Optional 0125-0076-1000 R18