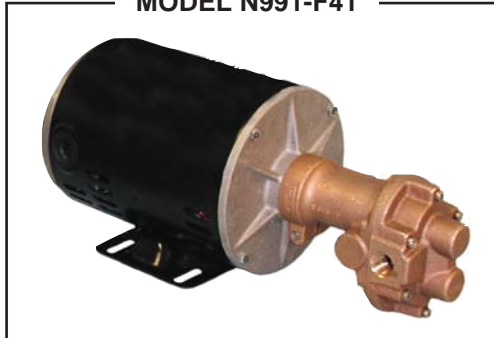


**CLOSE COUPLED BRONZE
ADAPTERLESS
ROTARY GEAR PUMP & AC MOTOR UNITS**

MODEL N991-F41



MODEL N993-J16



FEATURES

- Compact design eases installation and use in limited space areas.
- No adapter needed, pump mounts directly to motor.

See Models N999, N991, N992, N993 for additional pump head details.

- Rugged Commercial AC Motors
 - Automatic Thermal Overload Protection
 - Open Drip Proof*
 - Welded Rigid Base
 - 115 VAC 60 HZ
 - 1/3 HP (F41)
 - Modified NEMA 48 Frame
 - Continuous Duty
 - Reversible
 - 1/2 HP (J16)

PERFORMANCE - WATER 70°

* NOTE: For 1/3 HP TEFC - see F40

N999(R) Pump and AC Motor Unit

Model	Volts	HP	FL. Amps	Nom. Speed	Pressure (PSI)																					
					5	10	15	20	25	30	35	40	45	50	55	60	70	80	90	100	110	120	130	140	150	
F41	115 VAC	1/3			Flow (GPM)	1.1	1.0	1.0	1.0	1.0	0.9	0.9	0.9	0.8	0.8	0.8	0.8	0.7	0.7	0.6	0.6	0.6	0.5			
					Speed (RPM)	1790	1790	1790	1780	1780	1780	1780	1780	1780	1770	1770	1770	1770	1760	1760	1760	1760	1750			
9876	5.4 Amps	1725 RPM			Current (Amps)	5.2	5.2	5.2	5.2	5.2	5.2	5.2	5.2	5.2	5.2	5.2	5.2	5.2	5.3	5.3	5.3	5.4				
J16	115 VAC	1/2			Flow (GPM)	1.1	1.0	1.0	1.0	1.0	0.9	0.9	0.9	0.8	0.8	0.8	0.7	0.7	0.6	0.6	0.6	0.5	0.5	0.4	0.4	
					Speed (RPM)	1790	1790	1790	1790	1790	1790	1790	1790	1790	1780	1780	1780	1780	1780	1780	1780	1770	1770	1770	1770	1770
9948	8.6 Amps	1725 RPM			Current (Amps)	8.2	8.2	8.2	8.2	8.2	8.2	8.2	8.2	8.2	8.2	8.2	8.2	8.2	8.2	8.2	8.2	8.2	8.2	8.3		

N991(R) Pump and AC Motor Unit

Model	Volts	HP	FL. Amps	Nom. Speed	Pressure (PSI)																				
					5	10	15	20	25	30	35	40	45	50	55	60	70	80	90	100	110	120	130	140	150
F41	115 VAC	1/3			Flow (GPM)	2.1	2.1	2.1	2.0	2.0	2.0	1.9	1.9	1.9	1.8	1.8	1.8	1.7	1.6	1.6	1.6	1.5	1.5	1.4	1.4
					Speed (RPM)	1790	1790	1790	1780	1780	1780	1780	1780	1780	1780	1770	1770	1770	1760	1760	1750				
9876	5.4 Amps	1725 RPM			Current (Amps)	5.2	5.2	5.2	5.2	5.2	5.2	5.2	5.2	5.2	5.2	5.2	5.3	5.3	5.4	5.4					
J16	115 VAC	1/2			Flow (GPM)	2.1	2.1	2.1	2.1	2.0	2.0	2.0	1.9	1.9	1.9	1.8	1.8	1.7	1.7	1.6	1.6	1.5	1.5	1.4	1.4
					Speed (RPM)	1790	1790	1790	1790	1790	1790	1790	1780	1780	1780	1780	1780	1780	1780	1770	1770	1770	1770	1760	1760
9948	8.6 Amps	1725 RPM			Current (Amps)	8.2	8.2	8.2	8.2	8.2	8.2	8.2	8.2	8.2	8.2	8.2	8.2	8.2	8.2	8.2	8.3	8.3	8.4	8.4	

N992(R) Pump and AC Motor Unit

Model	Volts	HP	FL. Amps	Nom. Speed	Pressure (PSI)																			
					5	10	15	20	25	30	35	40	45	50	55	60	70	80	90	100	110	120		
F41	115 VAC	1/3			Flow (GPM)	4.4	4.3	4.3	4.3	4.2	4.2	4.1	4.1	4.0	4.0	3.9	3.9							
					Speed (RPM)	1780	1780	1780	1770	1770	1770	1760	1760	1760	1750	1750	1750	1750						
9876	5.4 Amps	1725 RPM			Current (Amps)	5.1	5.1	5.1	5.1	5.2	5.2	5.2	5.2	5.3	5.3	5.3	5.4							
J16	115 VAC	1/2			Flow (GPM)	4.4	4.4	4.3	4.3	4.3	4.2	4.2	4.2	4.1	4.1	4.1	4.0	3.9	3.9	3.7	3.7	3.6	3.5	
					Speed (RPM)	1790	1790	1780	1780	1780	1780	1780	1780	1770	1770	1770	1770	1760	1760	1760	1750	1740	1740	
9948	8.6 Amps	1725 RPM			Current (Amps)	8.1	8.1	8.1	8.1	8.1	8.1	8.1	8.1	8.1	8.1	8.1	8.1	8.2	8.2	8.3	8.4	8.5	8.7	

N993(R) Pump and AC Motor Unit

Model	Volts	HP	FL. Amps	Nom. Speed	Pressure (PSI)									
					5	10	15	20	25	30	35	40	45	
J16	115 VAC	1/2			Flow (GPM)	8.9	8.7	8.6	8.5	8.3	8.2	8.1	8.0	7.8
					Speed (RPM)	1790	1780	1770	1770	1760	1760	1750	1750	
9948	8.6 Amps	1725 RPM			Current (Amps)	8.0	8.0	8.1	8.2	8.2	8.3	8.4	8.5	8.6

Notes: Maximum recommended operating point

MODELS

N999-F41 N999-J16
 N991-F41 N991-J16
 N992-F41 N992-J16
 N993-J16



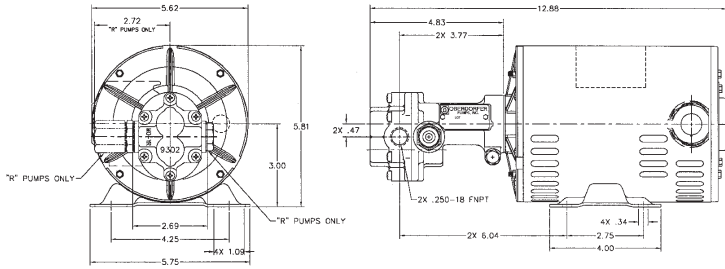
OBERDORFER PUMPS

A Gardner Denver Product

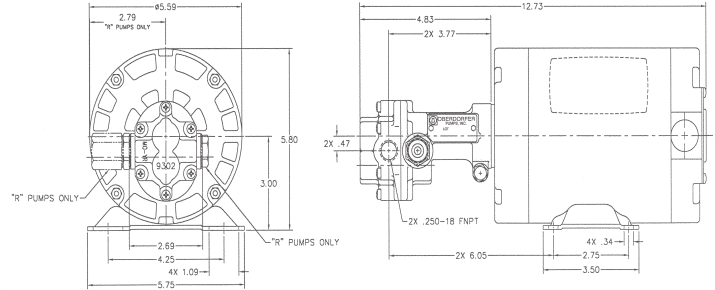
CLOSE COUPLED BRONZE ADAPTERLESS ROTARY GEAR PUMP & AC MOTOR UNITS

DIMENSIONS

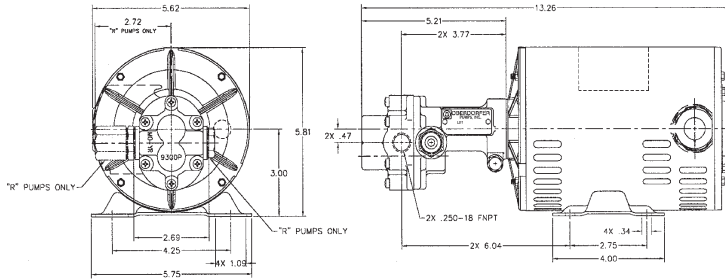
N999(R)-F41



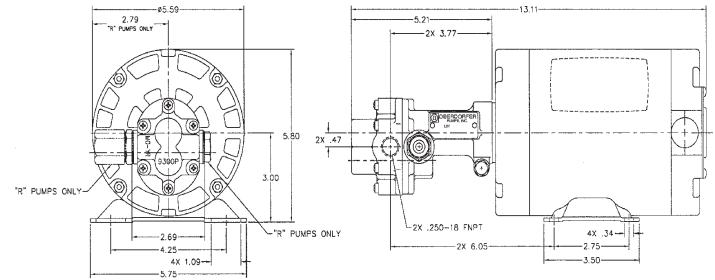
N999(R)-J16



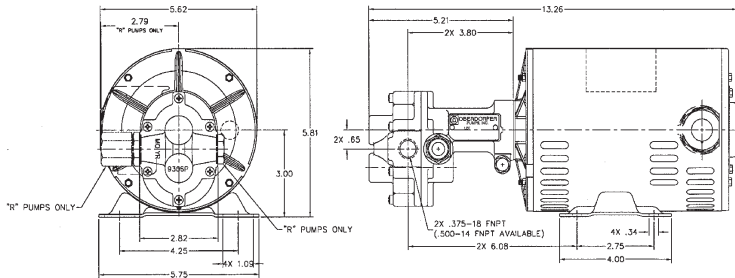
N991(R)-F41



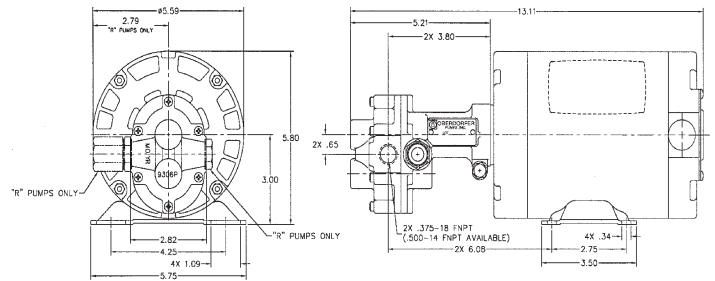
N991(R)-J16



N992(R)-F41



N992(R)-J16



COMMERCIAL MOTOR ADAPTER KITS

Adapter Kit	Kit Number	Description
M	10562	48 Frame
N	10816	56 Frame
P	11722	S56 Frame
Q	11331	56C Frame (to 3/4 HP)
C	11331H	56C Frame (above 3/4 HP)
F	11332	IEC71
----	----	Adapterless- Modified 48

N993(R)-J16