

Gobius[®] Pro

Wireless Tank Monitoring

NEW

It's smart, it's precise, it's clean

A revolution in Tank Monitoring

The new Gobius Pro measures tanks of all kinds of materials and fluids from the outside. Now with Bluetooth communication built into every sensor. And a clever builtin calibration functionality saves time and minimizes cost.



Strengths:

- Quick and easy installation
- Bluetooth communication
- 2 digital outputs, on/off signals
- Mounted on the outside of the tank, nothing on the inside
- No drilling of holes
- Easy to retrofit on an already installed tank

Sensor Technology with Bluetooth

You could say “Knock and listen” but it’s more sophisticated than that. A Gobius sensor exerts force onto a tank wall and causes it to vibrate. An accelerometer is part of the sensor and it measures the vibrations. The processor’s algorithm calculates a vibration value each time the sensor performs a measurement.

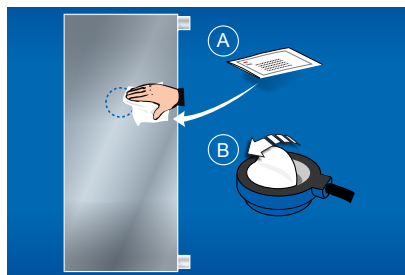
The Gobius Pro sensor is mounted on the outside of metal or plastic fluid tanks. No more mounting on the inside of the tank, no more drilling of holes. **The sensor can work alone on a tank but also together with several Gobius Pro sensors.**

The sensor has built-in Bluetooth communication for Android and iOS phones. In addition, the sensor has two outputs for integration, for example, in Bus-systems, control relays, lights or buzzers. Useful for all kinds of fluids, like fresh water, fuel, oil, grey/black water and waste water.

- Never in contact with the contents of the tank
- Handles tanks with aggressive and sterile liquids
- No risk for leakage or odour
- Cost-effective
- Do all settings with your phone
- Use 1 up to 9 sensors on one tank
- Choice calibration with full or empty tank
- Online Support

01

Where do you put the sensor?



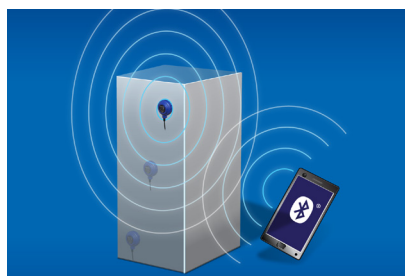
02

Connect the sensor



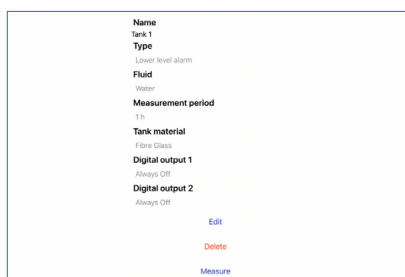
03

Contact



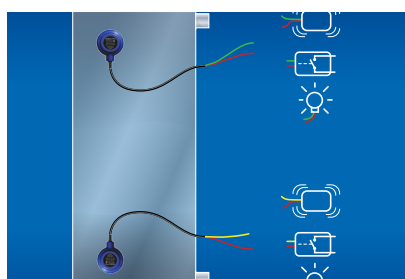
04

Config as you like



05

Integrate the sensor



06

Display the result



Gobius for demanding environments

In a sterile environment it's important to maintain the physical and chemical integrity of the liquid. This may be jeopardized when installing, changing or maintaining an indicator placed inside the tank. In addition, there is always a risk of leakage.

In a tank with an aggressive liquid, the sensor is exposed to wear and tear. Mechanical sensors in the tank are especially vulnerable, but even capacitive sensors mounted on the outside of the tank are affected. These sensors are sensitive to coating of calcium, magnesium, phosphorus alloys and other chemical components with metallic characteristics.

One unique property of Gobius Pro sensor is that it may be automatically adapted to different tank materials. This is not applicable for competitive measuring technologies which need presetting at factory or before installation. The clever built-in calibration functionality of our sensors saves time and minimizes cost.



Specifications

Art. No	970480
Size Sensor	Diameter 70 mm, height 25 mm
Size Packaging	146 x 103 x 62 mm (l x b x h)
Name App	Gobius, (iOS and Android)
Communication	Bluetooth, version 4.2 and higher
Languages	English, French, German, Italian, Norwegian and Swedish
Package content	1 sensor (2 meter cable), 1 extra sensor tape (3M), 1 cleaning tissue (3M), 1 red lamp and 1 Quick guide
Supply Voltage	12 – 24 Volt
Supply Current	100 mA (measuring), 10 mA (Idle)
Temperature	+10 – + 60 Celsius with +20 degrees temperature difference
Tank material max wall thickness	– Stainless steel, 3 mm – Steel, 3 mm – Aluminium, 5 mm – Polyethelene, 12 mm – Fiber Glass, 8 mm
Patent/ Trademark	US 8.448.509, Sweden 0701520-9 and Europe patent pending. Trademark Gobius, owned by Gobius Sensor Technology AB