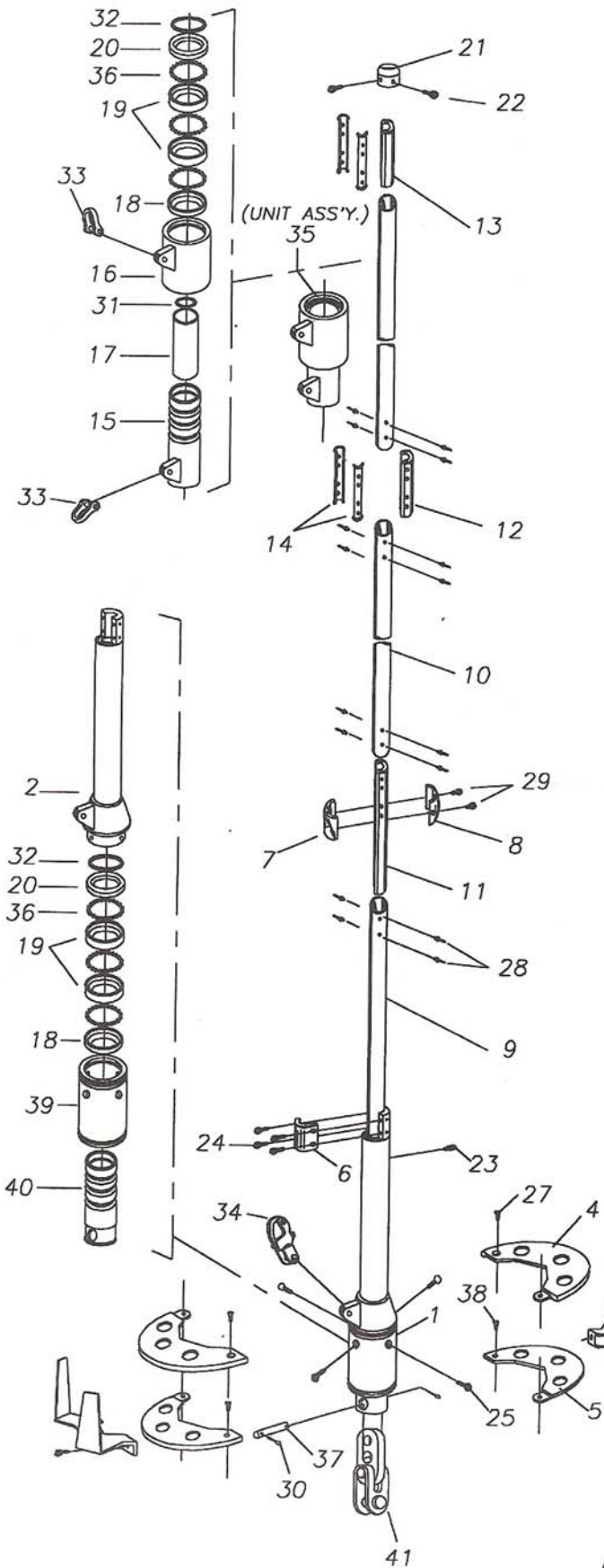


System 2100 Parts List



| 2100 PARTS LIST | | | |
|-----------------|------------------------------------|-----------|------|
| ITEM | DESCRIPTION | PART # | QTY. |
| 1 | DRUM BEARING HOUSING | 33-040-A | 1 |
| 2 | TORQUE TUBE | 33-039-A1 | 1 |
| 3 | COLLAR BRACKET PLATE | 45-236 | 2 |
| 4 | TOP PLATE | 35-322 | 2 |
| 5 | BOTTOM PLATE | 35-321 | 2 |
| 6 | TORQUE TUBE CLAMP | 32-024-01 | 1 |
| 7 | SAIL FEEDER FRONT HALF | 45-235-01 | 1 |
| 8 | SAIL FEEDER BACK HALF | 45-235-02 | 1 |
| 9 | BOTTOM FURL EXTRUSION | 14-054-01 | 1 |
| 10 | STANDARD FURL EXTRUSION - 72" LONG | 14-054-02 | 7 |
| 11 | LOWER JOINT | 14-061-01 | 1 |
| 12 | STANDARD JOINT | 14-061-02 | 7 |
| 13 | UPPER JOINT | 14-061-03 | 1 |
| 14 | JOINT LINER - 3/8" (10MM) WIRE | 25-289 | 16 |
| 15 | UPPER SWIVEL INNER BEARING RACE | 53-078-A | 1 |
| 16 | UPPER SWIVEL HOUSING | 33-041-A | 1 |
| 17 | SWIVEL BEARING LINER | 25-276 | 1 |
| 18 | BOTTOM BEARING RACE | 53-069 | 2 |
| 19 | MIDDLE BEARING RACE | 53-068 | 4 |
| 20 | TOP BEARING RACE | 53-067 | 2 |
| 21 | TOP CAP | 32-023 | 1 |
| 22 | SET SCREW | 22-060 | 2 |
| 23 | STOP PIN SCREW | 24-045 | 1 |
| 24 | CAP SCREW 10-24 X 5/8" LG. | 24-057 | 4 |
| 25 | FLAT HD. SCREW 1/4-20 X 5/8" LG. | 22-313 | 4 |
| 26 | CAP HD. SCREW 1/4-20 | 24-058 | 2 |
| 27 | FLAT HD. SCREW 10-24 | 22-309 | 2 |
| 28 | RIVET | 30-067 | 70 |
| 29 | CAP HD. SCREW 10-32 | 24-055 | 2 |
| 30 | COTTER PIN | 51-012-18 | 2 |
| 31 | RETAINER RING | 51-222 | 1 |
| 32 | RETAINER RING | 51-235 | 1 |
| 33 | SHACKLE | 93-11 | 2 |
| 34 | SNAP SHACKLE | 45-25 | 1 |
| 35 | UPPER SWIVEL UNIT ASSY. | 33-041-A1 | 1 |
| 36 | BALL BEARINGS (21 PER ROW) | 25-253 | - |
| 37 | CROSS PIN | 51-250 | 1 |
| 38 | FLAT HD. SCREW 10-24 X 5/16" LG. | 22-328 | 2 |
| 39 | DRUM HOUSING | 33-040 | 1 |
| 40 | DRUM INNER RACE | 53-066 | 1 |
| 41 | TOGGLE LINK W/ 1/2" DIA PIN | 46-016 | 1 |
| - | OR TOGGLE LINK W/ 5/8" PIN | 46-018 | - |
| 42 | HALF LENGTH FURL EXTRUSION | 14-054-03 | 1 |



Note
System 2100 parts listing includes all new part numbers as of 5/97. Please contact Schaefer for furlers manufactured prior to this date.

