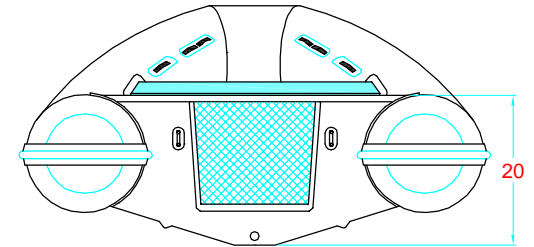
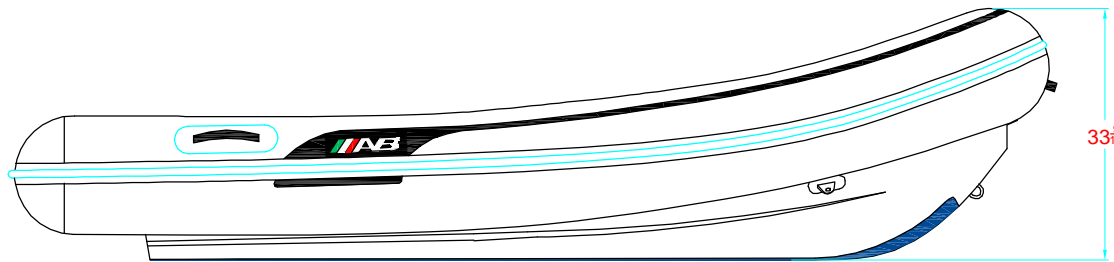


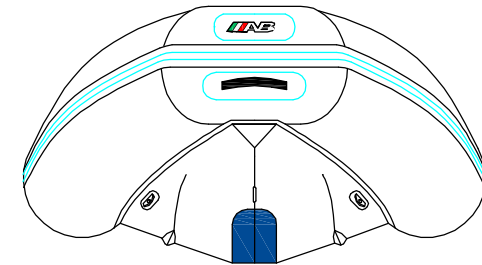
PLANT VIEW
VISTA SUPERIOR



AFT VIEW
VISTA TRASERA



LONGITUDINAL PROFILE
VISTA LATERAL




FORE VIEW
VISTA FRONTAL

MAIN PARTICULARS

MAXIMUM LENGHT/ESLORA MAX. _____ 11' 6" (3.50m)

MAXIMUM BEAM/MANGA MAX. _____ 5' 7" (1.70m)

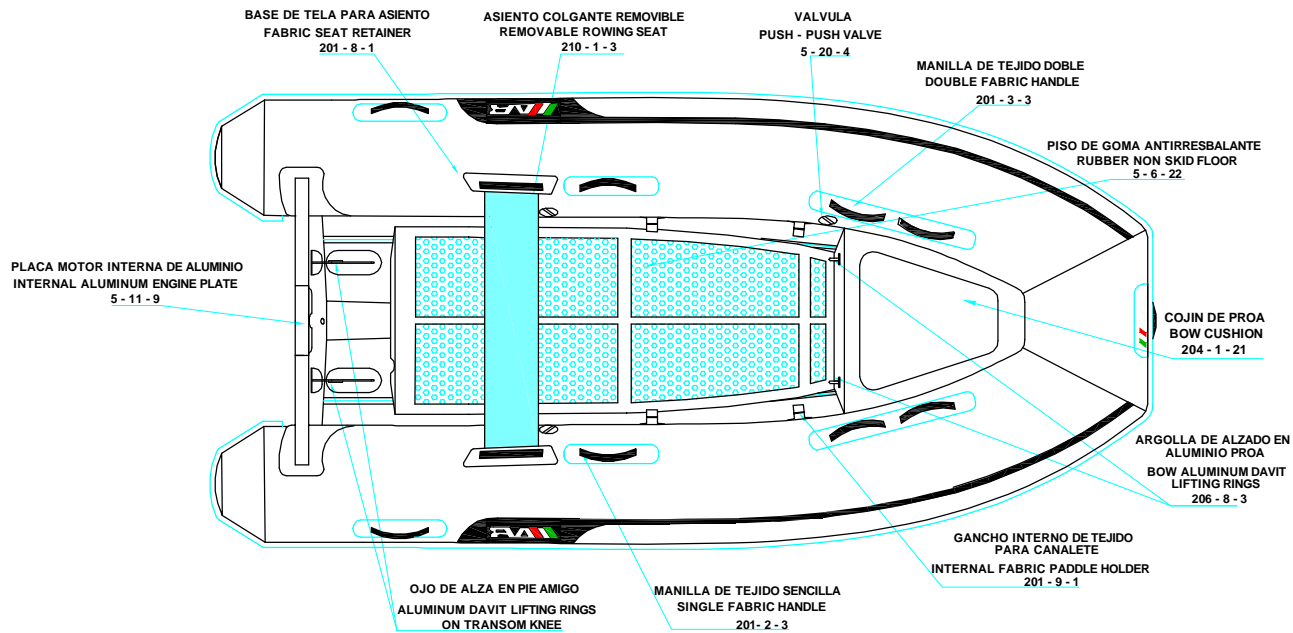
NOTES: 1.-ALL DIMENSIONS IN INCHES
TODAS LAS MEDIDAS ESTAN DADAS EN PULGADAS

SUBJECTED: ALEXANDER BARRIOS		TITLE: "LAMMINA 11 AL"					
APPROVED: HERMES GARCIA		GENERAL ARRANGEMENT ARREGLO GENERAL					
SCALE:	SHEET: 1/1	CODE:	PLAN:	No.REV 3	DATE	APPROVED:	

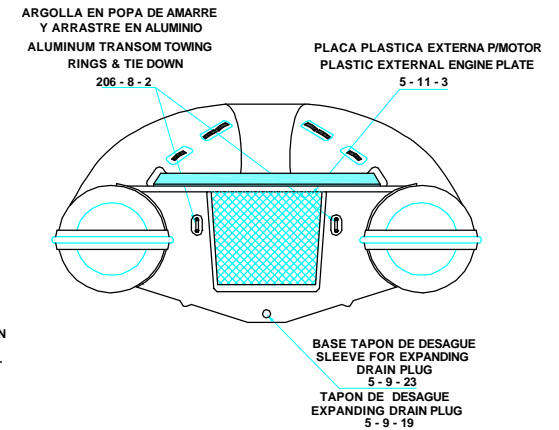
REV. 3

LAMMINA 11 AL

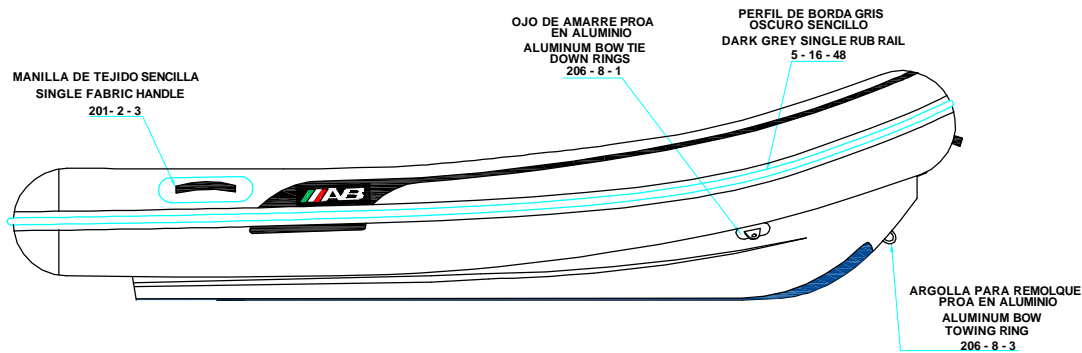
320 - 6 - 3



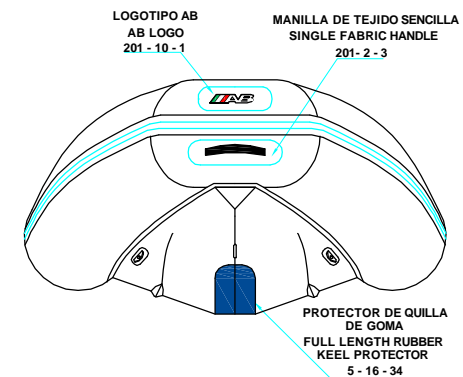
PLANT VIEW
VISTA SUPERIOR



AFT VIEW
VISTA TRASERA



LONGITUDINAL PROFILE
VISTA LATERAL



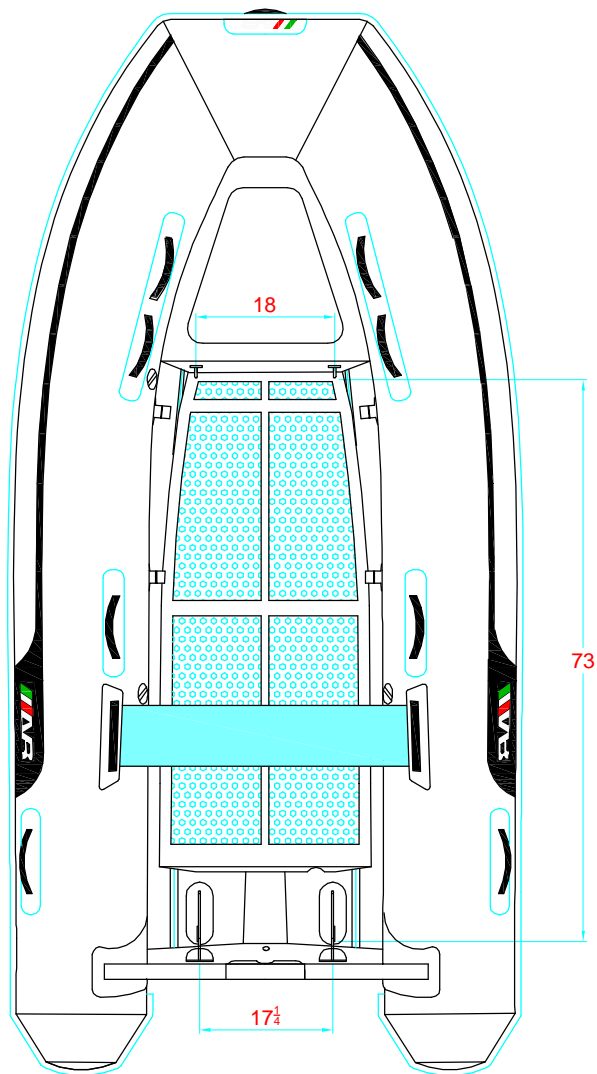
FORE VIEW
VISTA FRONTAL

NOTA: FAVOR INDICAR COLOR DEL BOTE AL ORDENAR / **NOTE:** MUST INDICATE BOAT COLOR WHEN ORDERING

REV. 3

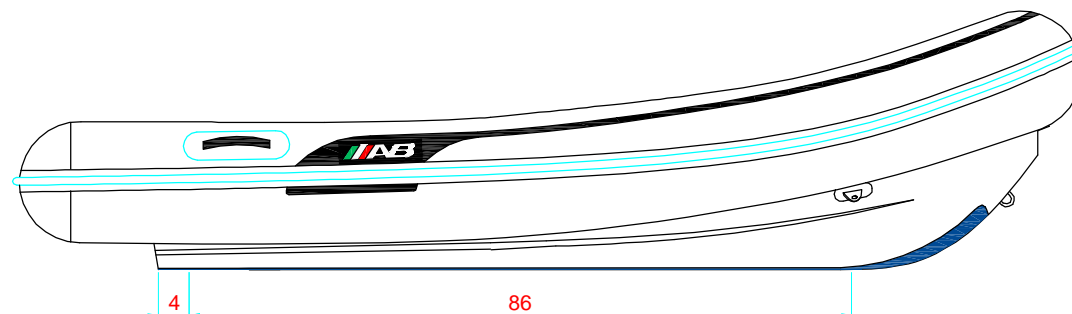
LAMMINA 11 AL

320 - 6 - 3

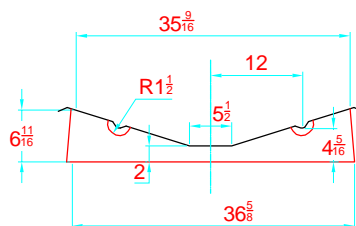


-LOCATION AND DISTANCE
OF DAVIT LIFTING POINTS

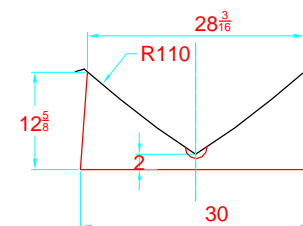
UBICACION Y DISTANCIA
DE LOS GANCHOS DE IZADO



LONGITUDINAL PROFILE
PERFIL LONGITUDINAL



TRANSVERSAL SECTION "A"
SECCION TRANSVERSAL "A"

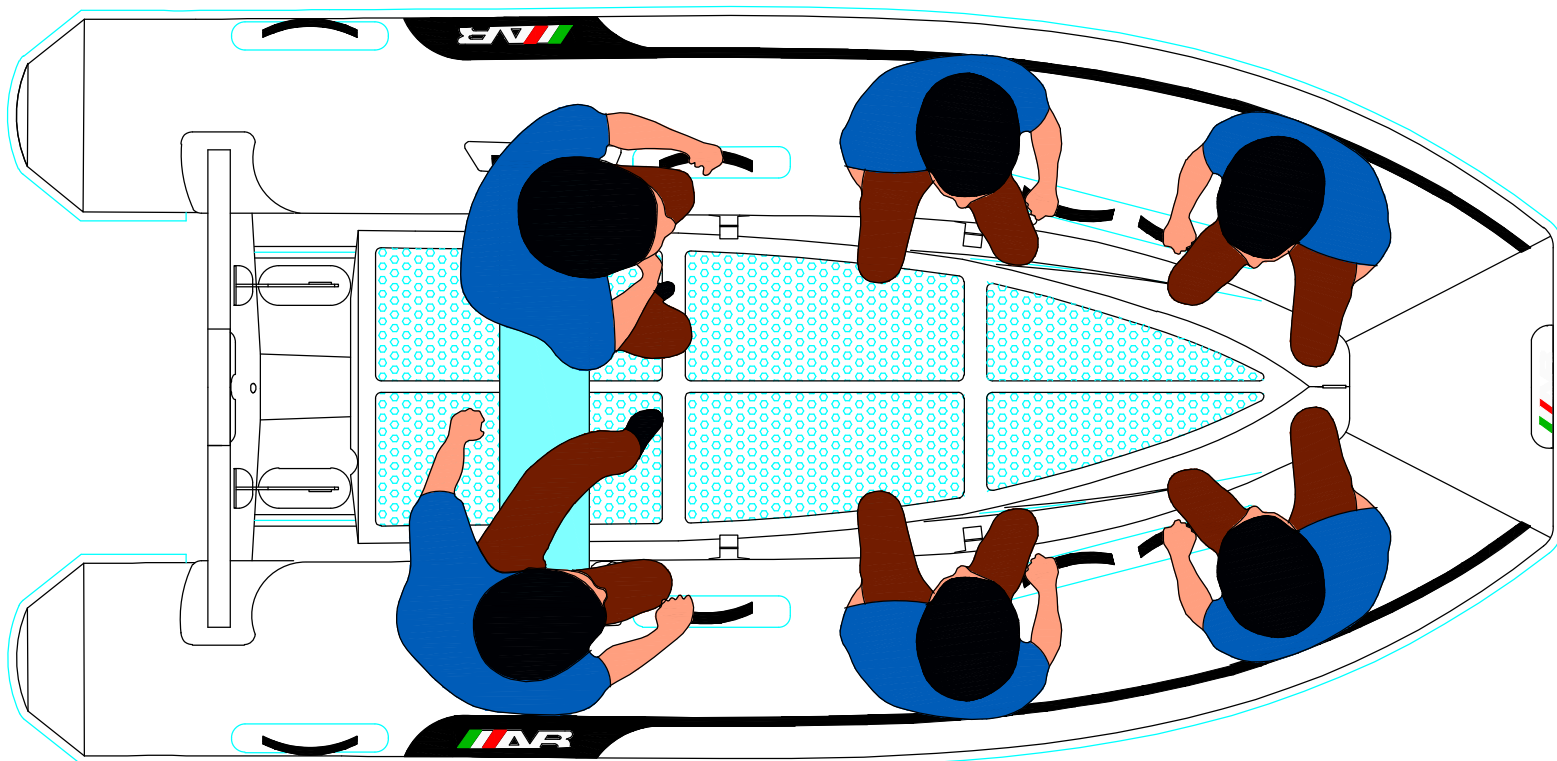


TRANSVERSAL SECTION "B"
SECCION TRANSVERSAL "B"


-RECOMMENDED CHOCK LOCATION AND BUILDING DIMENSIONS
UBICACION DE LAS CUNAS Y SUS MEDIDAS DE FABRICACION

-VERIFY MEASUREMENTS WITH ACTUAL HULL
VERIFICAR MEDIDAS DE ACUERDO A CASCO ACTUAL

NOTES: 1.- ALL DIMENSIONS IN INCHES
2.- MEASURES FROM CENTER OF CHOCK'S SURFACES



PLANT VIEW
VISTA SUPERIOR

		TITLE: "LAMMINA 11 AL" SEATING ARRANGEMENT DISPOSICION DE ASIENTOS						
SUBJECTED: ALEXANDER BARRIOS		SCALE:	SHEET: 1/1	CODE:	PLAN: 11 AL	No.REV 1	DATE 22.03.11	DRAWN HECTOR SUAREZ
APPROVED: HERMES GARCIA							DATE 22.03.11	APPROVED: JUAN GUERRERO