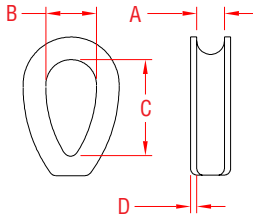


EXTRA HEAVY THIMBLE

304 STAINLESS STEEL



ITEM	SIZE	A	B	C	D	WT (lb)
S0123-XH06	1/4"	0.32"	0.67"	1.13"	0.06"	0.06
S0123-XH08	5/16"	0.33"	0.97"	1.70"	0.08"	0.12
S0123-XH10	3/8"	0.41"	1.11"	2.01"	0.06"	0.20
S0123-XH13	1/2"	0.47"	1.46"	2.48"	0.08"	0.31
S0123-XH16	5/8"	0.58"	1.86"	3.24"	0.15"	0.79
S0123-XH20	3/4"	0.73"	2.39"	3.77"	0.10"	0.81
S0123-XH22	7/8"	0.85"	2.52"	4.00"	0.10"	1.06
S0123-XH25	1"	0.97"	2.95"	4.56"	0.13"	1.45

NOTE:
PRECISION CAST EXTRA HEAVY DUTY THIMBLE, NOT FORMED FROM FLAT STEEL. EXCEPTIONAL RESISTANCE TO WEAR AND CRUSHING.