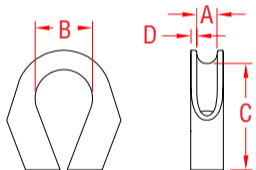


CAPTIVE THIMBLE

316 STAINLESS STEEL



| ITEM | A | B | C | D | WT |
|------------|--------|-------|-------|--------|------|
| | (size) | | | | (lb) |
| S0126-0013 | 1/2" | 1.50" | 2.76" | 0.158" | 0.53 |
| S0126-0016 | 5/8" | 1.77" | 3.41" | 0.177" | 0.90 |
| S0126-0020 | 3/4" | 1.97" | 3.98" | 0.236" | 1.78 |
| S0126-0025 | 1" | 2.48" | 4.74" | 0.256" | 2.84 |
| S0126-0032 | 1-1/4" | 2.87" | 5.37" | 0.256" | 3.75 |

NOTE:

MADE FROM GRADE 316 STAINLESS STEEL FOR CORROSION RESISTANCE AND DURABILITY. ITS PRIMARY FUNCTION IS TO HOLD THE WIRE OR FIBROUS ROPE "CAPTIVE" WHILE PREVENTING CHAFFING, MAKING IT IDEAL FOR IN-WATER BOAT TOWING APPLICATIONS.