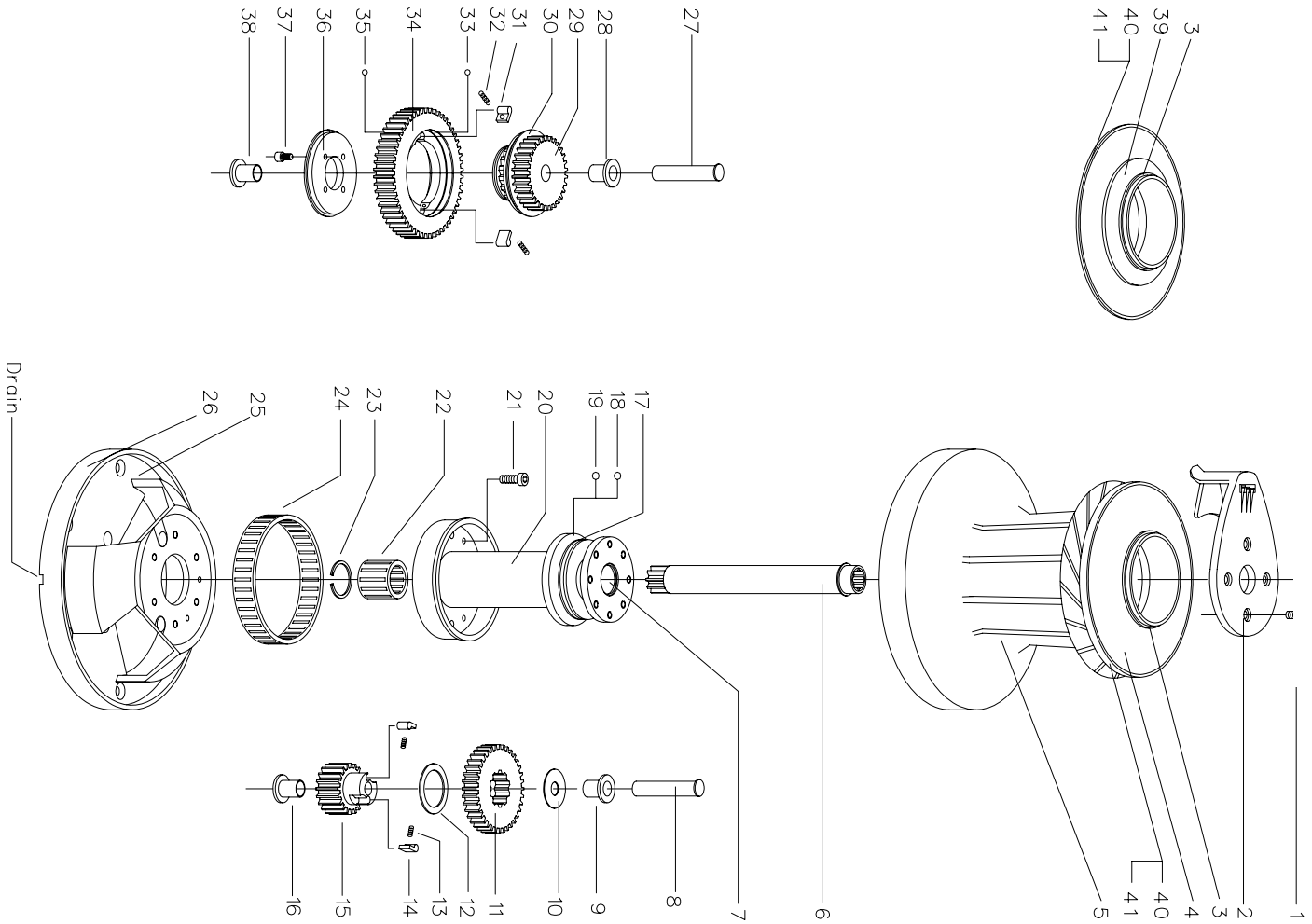


**ANDERSEN Winch 68ST - 72ST**



**SERVICE KIT 13**  
**FOR WINCH 68ST – 72 ST**  
**Part. No. 710013**  
**The service kit consists:**

QTY.	DESCRIPTION	PART. NO.
1	Screw M6X12	DIN912-A4-M6X12
1	Screw M8X16	DIN912-A4-M8X16
1	Screw M8X16	DIN6912-A4-M8X16
1	Screw M8X16	ISO7380-A4-M8X16
8	Spring	533500
4	Pawl	533400
2	Ball, Stainless steel	526301
2	Ball POM	526302
1	Retaining ring	589700
4	Bushing composite	529500
1	Circlip	590100U
4	Bushing composite	RD100657

Please unfold the this page to see the Complete Part Lists and Exploded Views for the winches.

Note! Variations can occur due to changes of the winch specifications.

**Manufactured by:**

**Fr. Andersens Maskinfabrik A/S**

**DK – 7100 Vejle Denmark**

**www.andersenwinches.com**

**E-mail: info@andersenwinches.com**



# 68ST/ - 72ST PARTS LIST

Version 2.1

POS.	QTY.	DESCRIPTION	ART. NO.
1.	4	Screw	DIN 7380-A4-M8×16
2.	1	Self-tailing arm (68ST)	746000
2.	1	Self-tailing arm (72ST)	748800
3.	1	Circlip	590100U
4.	1	Composite top	736900
5.	1	Drum, complete	746201
6.	1	Drive shaft, complete	529902
7.	1	Bushing, composite	<i>Not removable</i> 716501
8.	1	Shaft	529800
9.	1	Bushing, composite	529500
10.	1	Washer	529600
11.	1	Ratchet gear (68ST)	529100
11.	1	Ratchet gear (72ST)	537100
12.	1	Washer	588100
13.	2	Spring	533500
14.	2	Pawl	533400
15.	1	Pawl gear (68ST)	529300
15.	1	Pawl gear (72ST)	537000
16.	1	Bushing, composite	529500
17.	1	Retaining ring	<i>Not removable</i> 589700
18.	18	Ball, stainless steel	526301
19.	18	Ball, POM	526302
20.	1	Upper base	745601
21.	6	Screw	DIN 912-A4-M8×16
22.	1	Roller bearing, complete	724100
23.	1	Circlip	724300
24.	1	Roller bearing, complete	558001
25.	1	Lower base	750100
26.	1	Base cover (standard)	745800
26.	1	Base cover (stainless steel)	745810
27.	1	Shaft	529800
28.	1	Bushing, composite	529500
29.	1	Ratchet gear	529202
30.	1	Ball bearing ring	588600
31.	2	Pawl	533400
32.	2	Spring	533500
33.	47	Ball, stainless steel	724900
34.	1	Pawl gear	540100
35.	47	Ball, stainless steel	724900
36.	1	Ball bearing ring	588701
37.	4	Screw	DIN 912-A4-M6×12
38.	1	Bushing, composite	529500
39.	1	Top ring (stainless steel)	521300
40.	1	Self-tailing top (standard)	543000
40.	1	Self-tailing top (stainless steel)	543010
41.	6	Screw (standard)	589902
41.	6	Screw (stainless steel)	DIN 912-A4-M6x16