

# More Than A Chartplotter... Fishing Edition

Today's multifunction displays offer far more than just charting and navigational tools. Integrated and network sonar modules turn your display into a fishing powerhouse. Whether you fish lakes, rivers, coasts, or offshore locations, brands like Raymarine, Lowrance, Simrad, and Furuno provide advanced fishing features to help you land your next record catch.

**Raymarine®**

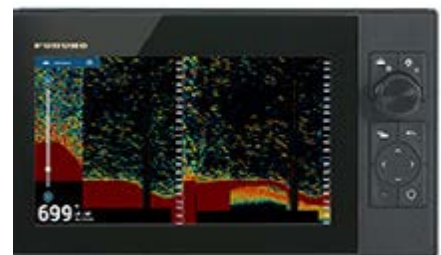
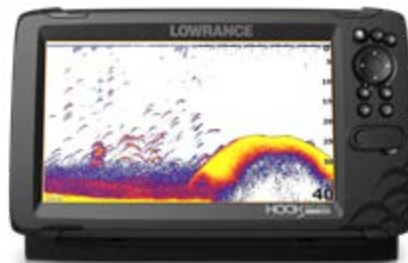
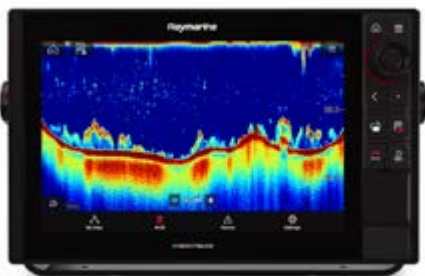
**LOWRANCE**  
**SIMRAD**

**FURUNO**

**CHIRP Sonar**

**CHIRP Sonar**

**CHIRP Sonar**



CHIRP (Compressed High-Intensity Radiated Pulse) sonar sweeps a range of frequencies continuously to provide the best target acquisition and separation. This enables the user to see fish more clearly, and distinguish individual bait fish from a school.

**DownVision**

**DownScan**



High frequency scanning sonar displays a picture-like image of bottom structure under the boat.

# More Than A Chartplotter... Fishing Edition

## Raymarine

### SideVision



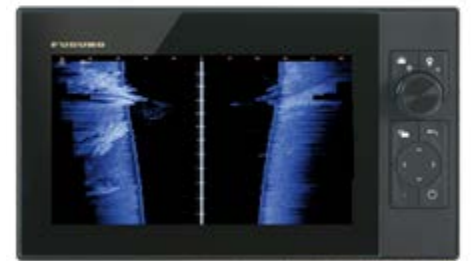
## Lowrance & Simrad

### SideScan



## Furuno

### Side Scan



High frequency scanning sonar displays a picture-like image off to port and starboard of the boat.

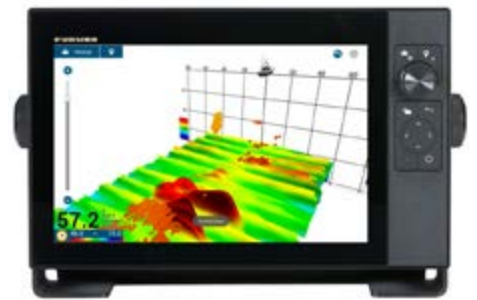
### RealVision 3D



### StructureScan 3D



### 3D



3D Sonar Imaging allows the user to see fish and the bottom from multiple angles in an easy to read format.